

Instruction of installing T14SG speech data

Before installing the speech data, it is necessary to update the software of T14SG to the later of Ver.2.0.

If the software version of T14SG is before Ver.2.0, the speech data can not be installed.

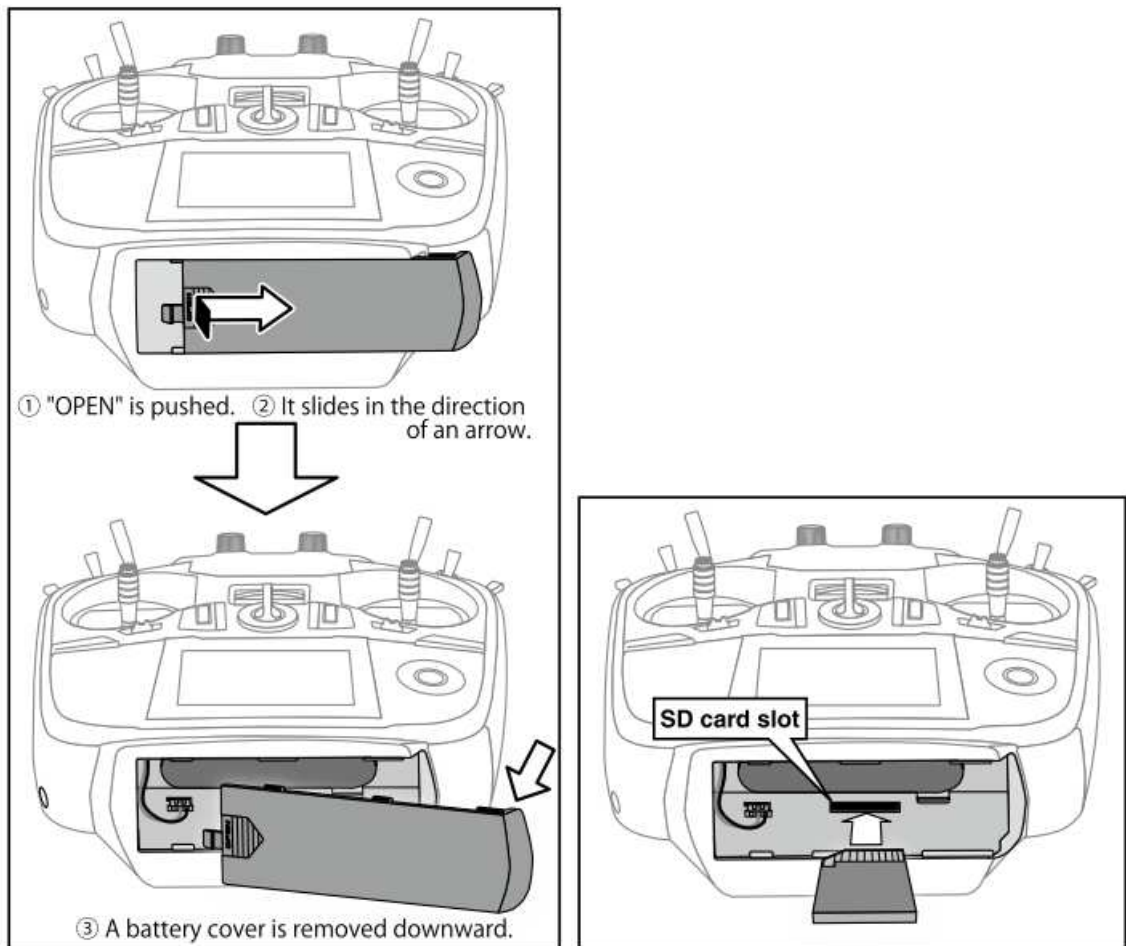
There are three language versions, English, German, and Japanese, in speech data. It is possible to install only one language of them.

If you install other language data after installing one language data, other language data overwrites the language data which already installed.

1. SD card format

You should format the SD card first by using T14SG. When the SD card is formatted, all the data is deleted. Please do not format it when there is critical data.

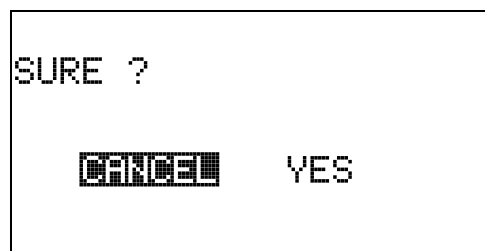
1.1. Please attach the SD card in the SD card slot of T14SG.



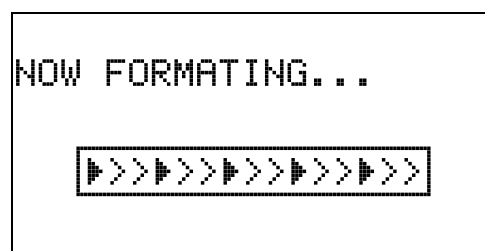
- 1.2. Please turn on power switch of T14SG. If the SD card not formatted is set, the following screen is displayed. Please select "FORMAT" by scroll operation of touch sensor and touch "RTN".



- 1.3. Please Select "YES" and touch "RTN".



- 1.4. The following screen is displayed during formatting.



- 1.5. When the format is completed, the following screen is displayed.



- 1.6. Please turn off power switch and detach the SD card from card slot.

2. Making of card for soft update

2.1. Please unzip the zipped file. The following files will create.

English Version

- T14sgInstallSoundEng.exe ... File copy utility
- T14sgUpdate.dat ... Information file for T14sgInstallSoundEng.exe
- T14SG_INSTALL_SOUND.dat ... Identified file of T14SG
- T14sgSpeechEng1.bin ... Data file (piece 1)
- T14sgSpeechEng2.bin ... Data file (piece 2)
- T14sgSpeechEng3.bin ... Data file (piece 3)

German Version

- T14sgInstallSoundGer.exe ... File copy utility
- T14sgUpdate.dat ... Information file for T14sgInstallSoundEng.exe
- T14SG_INSTALL_SOUND.dat ... Identified file of T14SG
- T14sgSpeechGer1.bin ... Data file (piece 1)
- T14sgSpeechGer2.bin ... Data file (piece 2)
- T14sgSpeechGer3.bin ... Data file (piece 3)

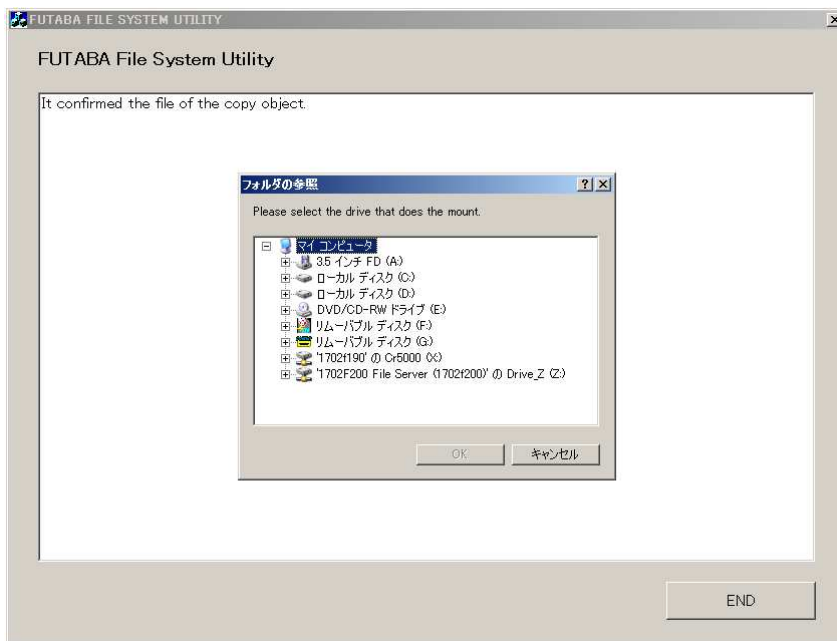
Japanese Version

- T14sgInstallSoundJpn.exe ... File copy utility
- T14sgUpdate.dat ... Information file for T14sgInstallSoundEng.exe
- T14SG_INSTALL_SOUND.dat ... Identified file of T14SG
- T14sgSpeechJpn1.bin ... Data file (piece 1)
- T14sgSpeechJpn2.bin ... Data file (piece 2)
- T14sgSpeechJpn3.bin ... Data file (piece 3)

2.2. Please attach the SD card formatted to the card reader of PC.

2.3. Please run “T14sgInstallSound***.exe”.

2.4. Please select the drive that attached the SD card. Click the "OK" button.



2.5. The following dialog is displayed. Click the "OK" button.



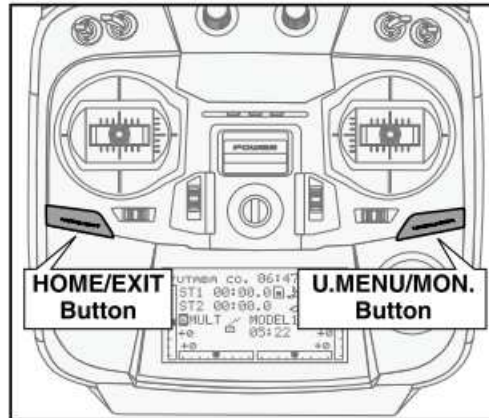
2.6. Update files is copied to SD card, the following screens are displayed. Click "END" button.



2.7. Please detach the SD card.

3. Install speech data

- 1.1. Please insert the SD card which includes the update file.
- 1.2. Push the “HOME/EXIT” button.
- 1.3. Keep pushing the “HOME/EXIT” button and turn on the power switch.



- 1.4. The following screen is displayed after a few second.

INSTALL SOUND
START : PUSH MON. 3SEC

- 1.5. Please push the “U.MENU/MON.” button for three seconds, a installing is begun.

INSTALL SOUND
INSTALLING



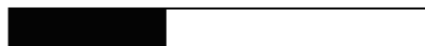
- 1.6. Once, the progress bar reaches the end. (About 16 sec.)
The progress bar restarts immediately.

INSTALL SOUND



- 1.7. The bar is progressed slowly.

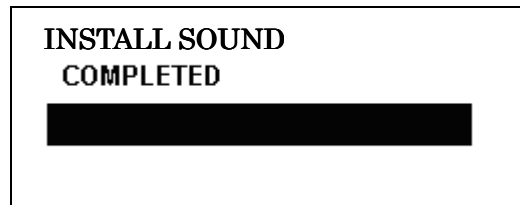
INSTALL SOUND
INSTALLING



1.8. The progress bar reached the end again. (About. 2 min.)

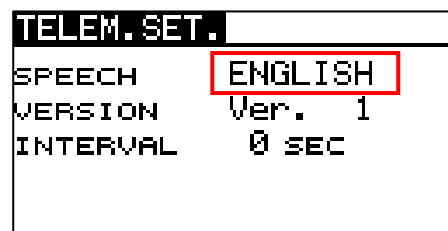
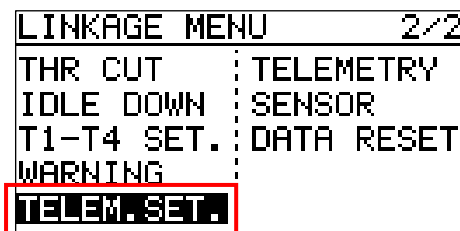
And, "COMPLETED" is displayed. Please turn off the power.

(Please DO NOT turn off the power before "COMPLETED" is displayed.).



1.9. Please detach SD card.

1.10. Please check the language at TELEM.SET. menu in LINKAGE menu.



※ TELEM.SET. menu is displayed at FASSTest 14CH mode or FASSTest 12CH mode only.

T14SG/FX-22 Ver.2.0 Description of new functions

1 Telemetry screen is modified

The telemetry screen which is displayed after pushing HOME/EXIT key at HOME screen is modified.
You can display any items on the telemetry screen up to 4 items.
When you display 1 item or 2 items, the letter size is bigger than 4 items.

Ex. 1 item is displayed

TELEMETRY	
ALTITUDE SBS-01A	
+72	m

If the numeric part (included "+", "-", ".", ",") is over the 6 letters, it becomes the smaller size automatically.
It is same size as 2 items screen.

Ex. 2 items are displayed

TELEMETRY	
Rx-BATT. RECEIVER	
6.3V	
EXT-VOLT RECEIVER	
11.1V	

Ex. 3 items are displayed

TELEMETRY	
Rx-BATT. RECEIVER	ALTITUDE
6.3V	+24 m
EXT-VOLT RECEIVER	SBS-01A
11.1V	

Ex. 4 items are displayed

TELEMETRY	
Rx-BATT. RECEIVER	ALTITUDE
6.3V	+24 m
EXT-VOLT RECEIVER	VARIO
11.1V	+16m/s

Please move the cursor to the sensor name button and touch "RTN". Then, the register of TELEMETRY SCREEN is displayed.

Please move the cursor to the display item button and touch RTN. Then, the telemetry alert setting screen is displayed.

For example, when you move the cursor to "ALTITUDE" and touch RTN. The telemetry alert screen of the altitude is displayed.

For example, when you move the cursor to "SBS-01A" and touch RTN. The register of the telemetry screen is displayed.

Registry screen of the telemetry screen

TELEMETRY	
DISPLAY	3
START SLOT	3
SENSOR	SBS-01A
	ALTITUDE

Telemetry alert setting screen

ALTITUDE	
1/2	
<MIN/MAX>	+68 m
	-47 m
↑ALERT	ACT
↑THRESHOLD	+200 m
↑Vibes	OFF

The register of the telemetry screen

TELEMETRY	
DISPLAY	4
START SLOT	8
SENSOR	SBS-01G
	DISTANCE

This indicates the place on the screen. It can register up to 4 items. The layout and letter size is defined by the number of the registered items.
When there is 1 item, it has to be registered to No.1.
When there are 2 items, they have to be registered to No.1 and No.2.
When there are 3 items, they have to be registered to No.1, No.2 and No.3.

Display No. and the place on the screen

1	
1	2
1	3
2	4

Please select the sensor.
If you select "-----", nothing is displayed.

When the sensor has some items, please select the item you want to display.

※ The registry of the telemetry screen can be set at FASSTest 14CH mode only.
At FASSTest 12CH mode, the telemetry screen is fixed. It displays "Rx BATT." and "EXT.VOLT" only.
And, at FASSTest 12CH mode, the cursor can not move to the sensor name.

2 The key-lock function is added to the telemetry screen

At the telemetry screen, the long push of the HOME/EXIT key or long touch of S1 is key lock/unlock..

AUTO LOCK TIMER and START LOCK in AUTO LOCK menu in SYSTEM MENU are available.

※ AUTO LOCK TIMER and START LOCK in AUTO LOCK menu in SYSTEM MENU are valid to both screens of HOME and Telemetry.

Key icon is displayed when it is key-lock.

TELEMETRY	
Rx-BATT. RECEIVER	6.3V
EXT-VOLT RECEIVER	11.1V

3 Speaking telemetry data

※ It is not only software update, the installing of the speech data is necessary.

There are English version and German version at speech data.

The speech language is installed language of the speech data. It does not depend on the displaying language

※ The speech function is only the phone jack. Please prepare the earphone or the speaker with $\phi 3.5$ plug in the market.

TELEM.SET. menu is added to the LINKAGE MENU.

LINKAGE MENU 2/2	
THR CUT	TELEMETRY
IDLE DOWN	SENSOR
T1-T4 SET.	DATA RESET
WARNING	
TELEM.SET.	

The speech language installed is indicated.
When the speech data is not installed, "----" is displayed.

TELEM.SET.	
SPEECH	ENGLISH
VERSION	Ver. 1
INTERVAL	0 SEC

The version No. of the speech data file is indicated.
When the speech data is not installed, nothing is displayed.

The interval of speech can be set.
The setting range is from 0 [Sec] to 30 [Sec].

The phone volume is added to SOUND menu in SYSTEM MENU.

SOUND	
TIMER	ON
WARNING	ON
TELEMETRY	ON
OTHER SOUND	ON
PHONE VOLUME	5

The setting range is from 0 to 30.
0 is silence.

ACT/INH button and ON/OFF switch button of the speech function are added to the telemetry alert screen.

ALTITUDE 2/2	
↑ALERT	ACT
↑THRESHOLD	-50 m
↑Vibes	OFF
SPEECH	ACT
REFERENCE	SET

ACT/INH button

ON/OFF button

When the speech function is valid, "on" is displayed.
When the speech function is INH or the switch is off, nothing is displayed.
There is a case that the speech function does not work when the telemetry data is not received, even if "on" is displayed.

※ The format of the speech output is
[sensor type][data][unit][data][data][data]

Ex. Rx battery

「battery」「seven point four」「volt」「seven point four」「seven point four」「seven point four」「seven point four」

※ In the case that the telemetry data is changed frequently, the speech data is not same as the displayed data.

When the telemetry alert occurred, the speech function works.

```

ALTITUDE 1/2
<MIN/MAX> +68 m
-47 m +68 m
↑ALERT ACT
↑THRESHOLD +200
↑Vibes OFF
  
```

```

ALTITUDE 2/2
↑ALERT ACT
↑THRESHOLD -50 m
↑Vibes OFF
SPEECH ACT SA on
REFERENCE SET
  
```

When the ALERT button is ACT, the speech function works when the alert occurs.

※ The format of the speech output of the alert is
"warning"[sensor type][data][unit]

Ex. Rx battery

「warning」「battery」「four point zero」「volt」

※ In the case that the telemetry data is changed frequently, the speech data is not same as the displayed data.

4 The setting range of the threshold of temperature sensors is modified.

```

TEMP. 1/2
<MIN/MAX>
↑ALERT INH
↑THRESHOLD +100°C
↑Vibes OFF
  
```

•Press the S1 button to advance to the next page

```

TEMP. 2/2
↑ALERT INH
↑THRESHOLD +0°C
↑Vibes OFF
  
```

-19~200°C (↑ THRESHOLD > ↓ HRESHOLD)
at both of SBS-01T and Temp125

-20~199°C (↑ THRESHOLD > ↓ THRESHOLD)
at both of SBS-01T and Temp125