

JIF.65

VELERO
CLASE RG-65

ESLORA = 65 cm.

MANGA = 17.2 cm.

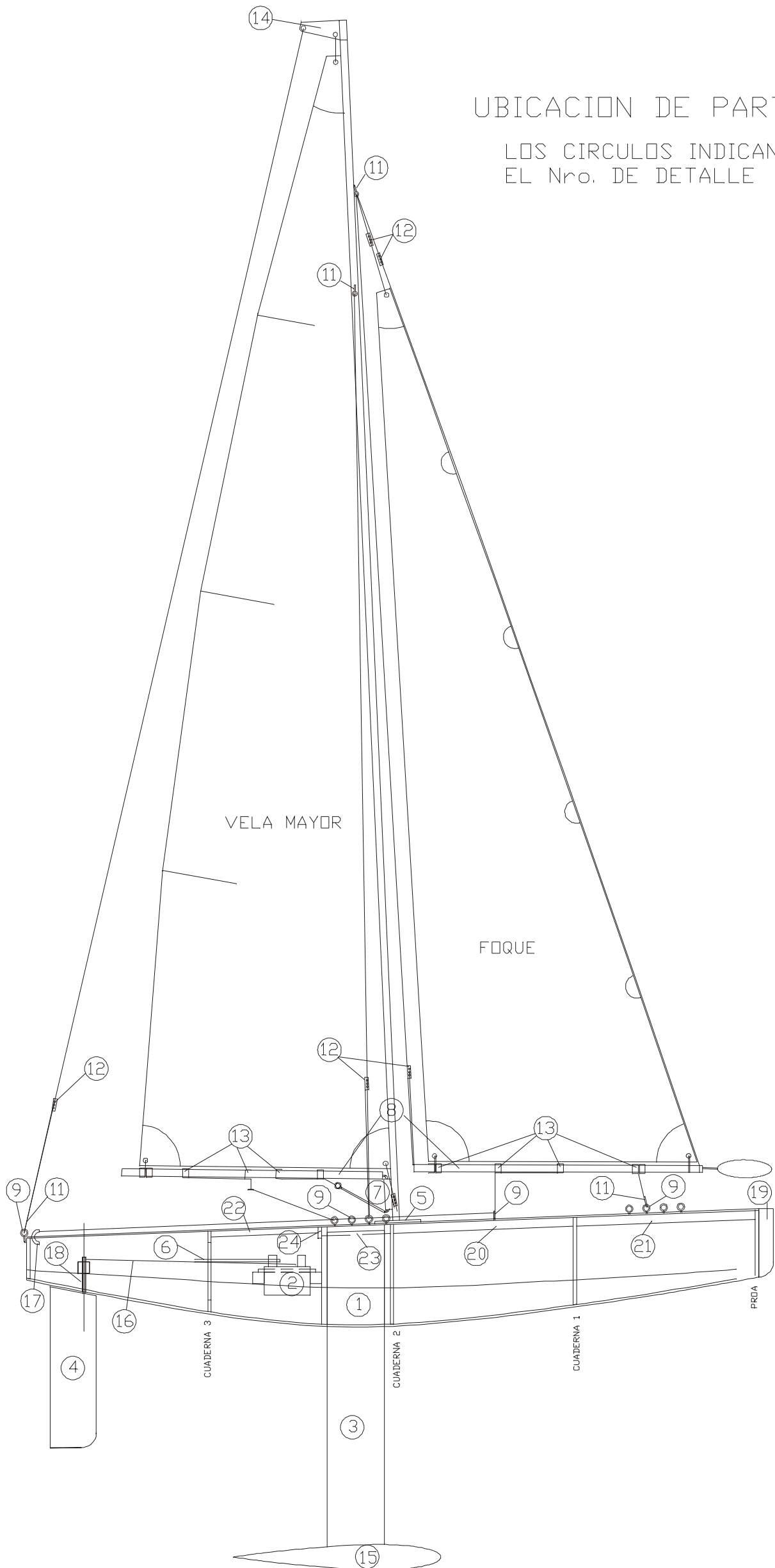
PESO = 1.00 kg.

DISEÑO = M. LANGE

FECHA = 01/08/02

UBICACION DE PARTES

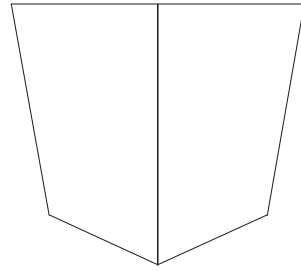
LOS CIRCULOS INDICAN
EL Nro. DE DETALLE



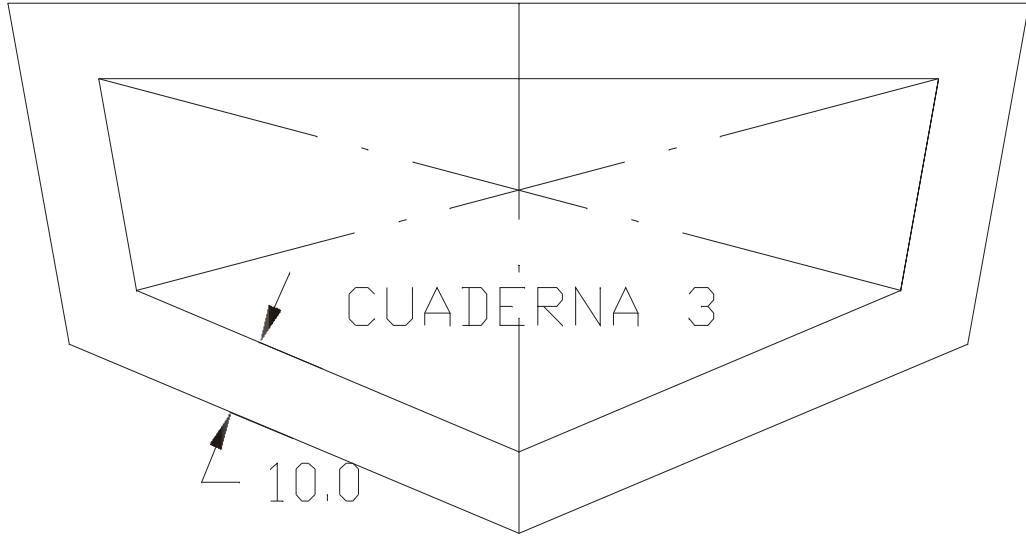
CUADERNAS

ESPESOR= 3mm. BALSA

ESCALA 1 : 1



ESPEJO POPA

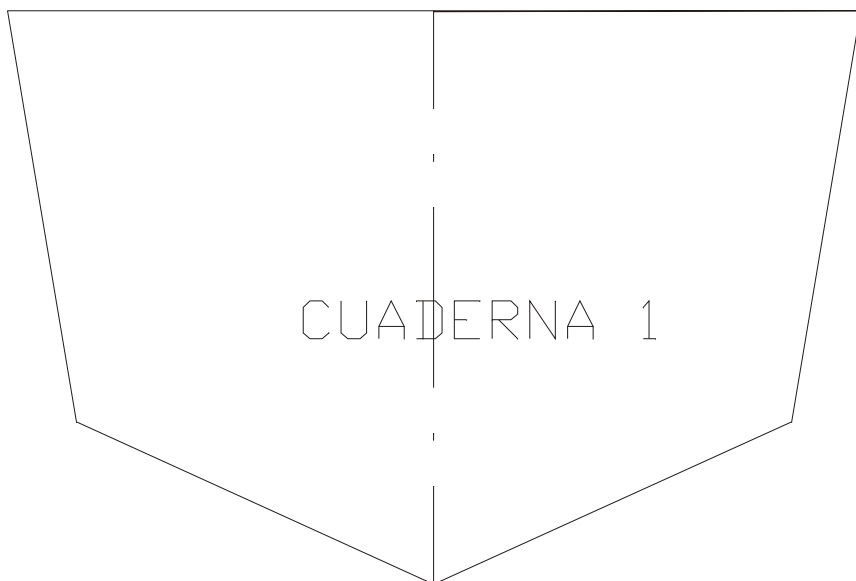


CUADERNA 3

10.0

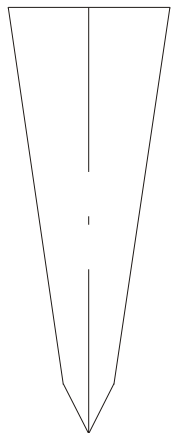


CUADERNA 2



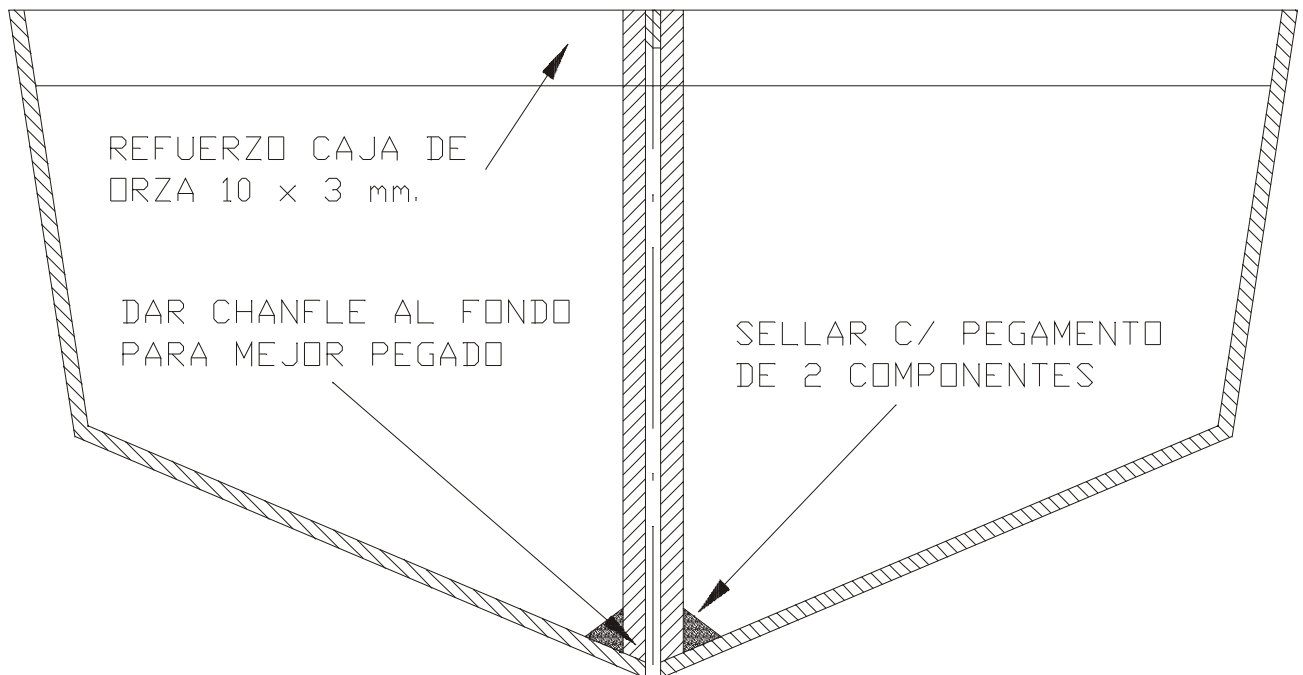
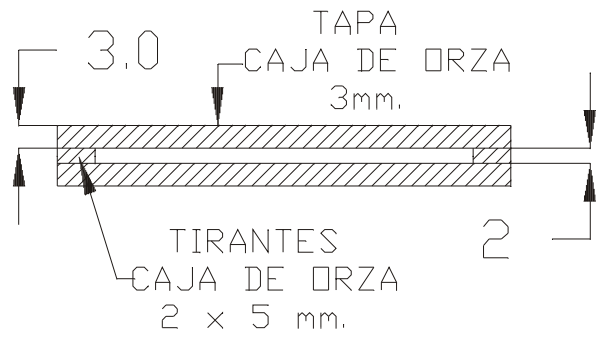
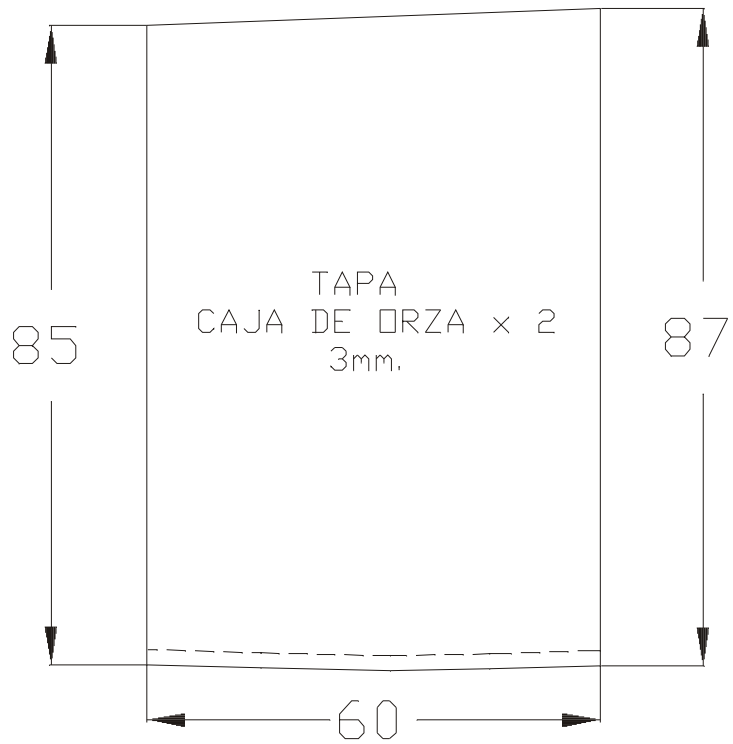
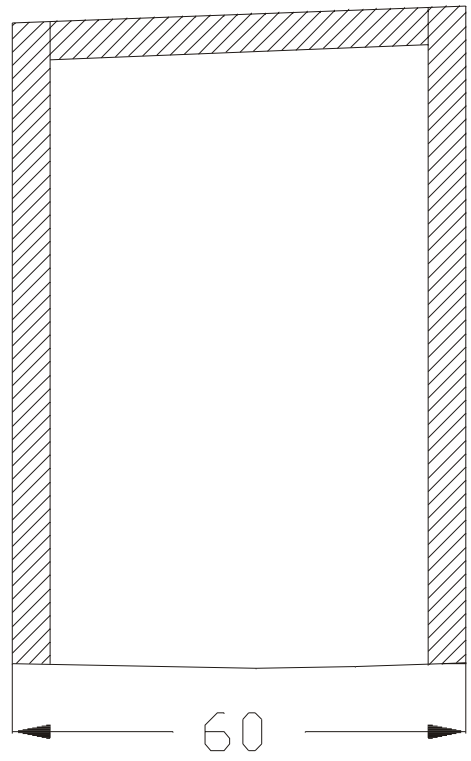
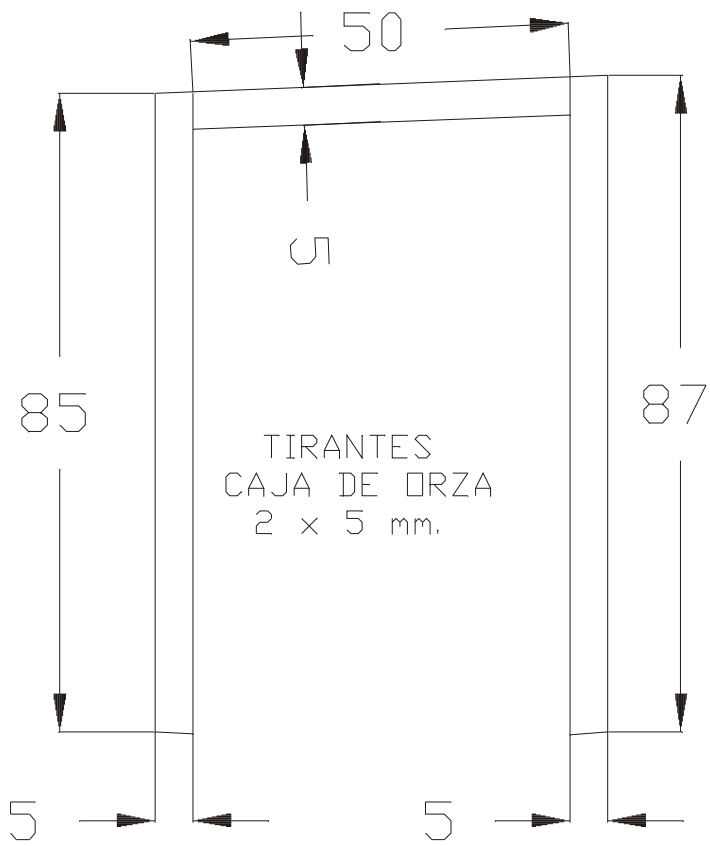
CUADERNA 1

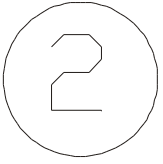
PROA



1

CAJA DE ORZA
ESCALA 1 : 1

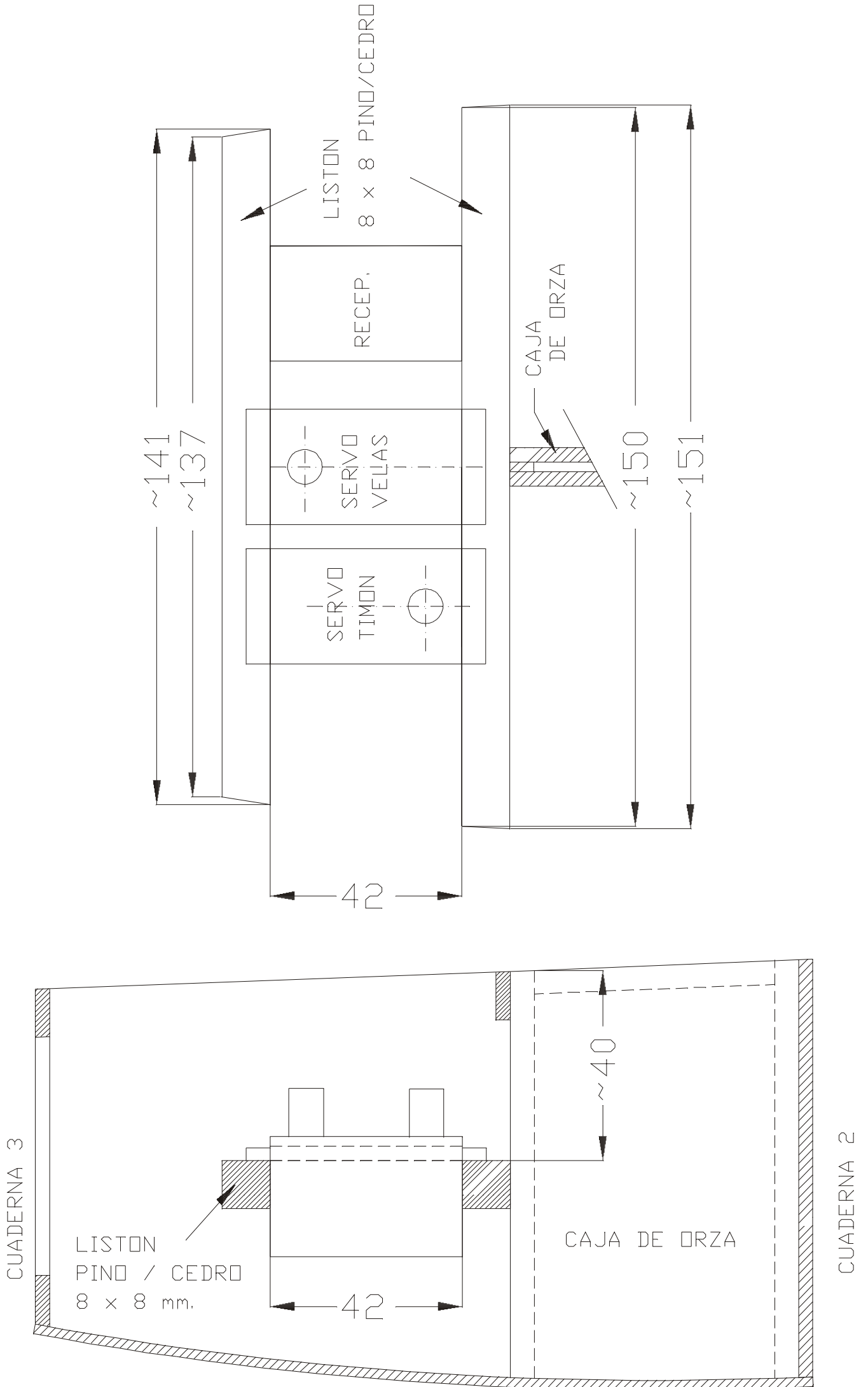




SOPORTE SERVOS

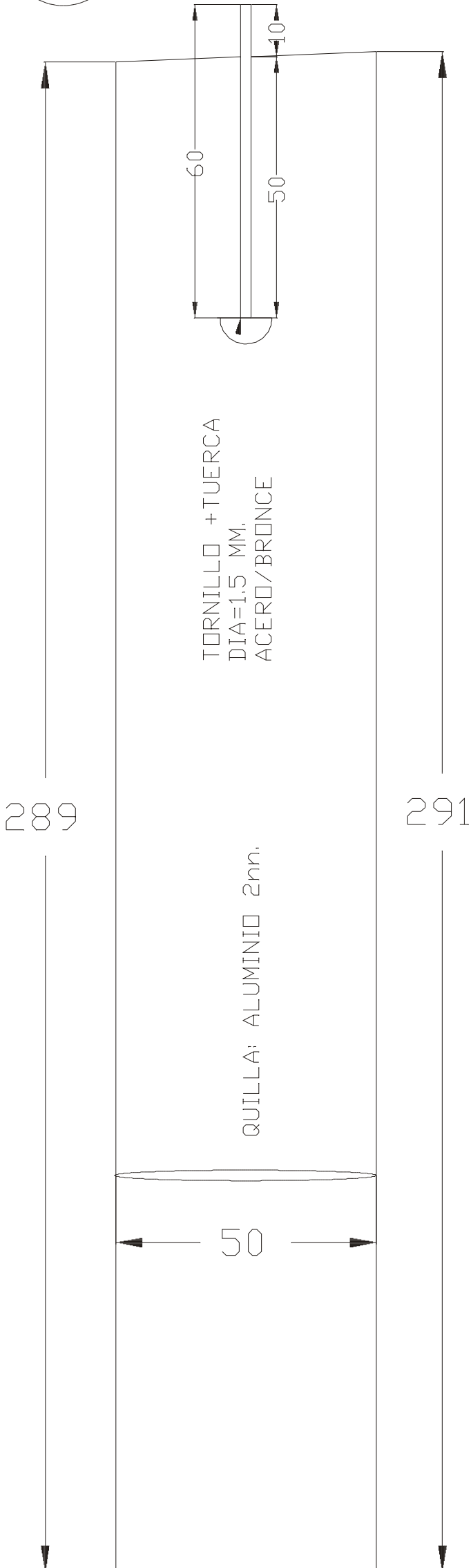
ESCALA 1: 1

NOTA: LAS COTAS CON (~) SON APROX.



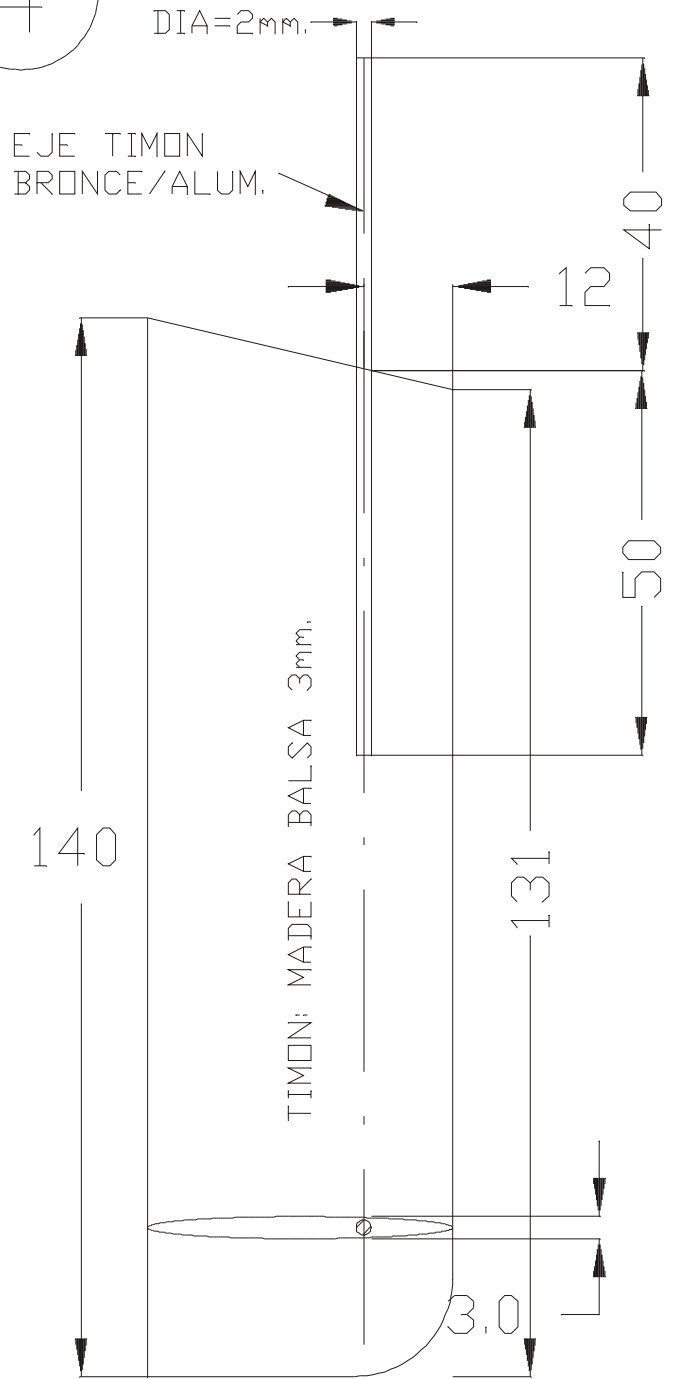
3

QUILLA
ESCALA 1: 1



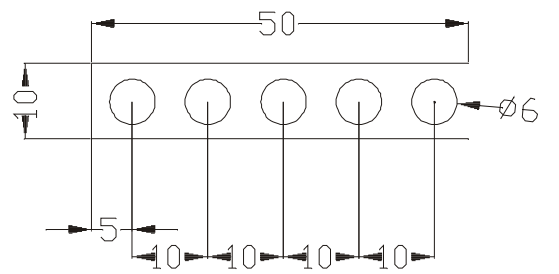
4

TIMON ESCALA 1: 1



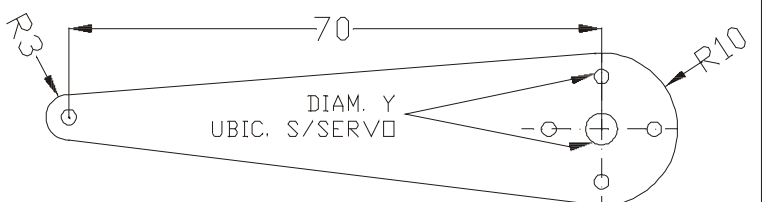
5

APOYO MASTIL
ALUMINIO 2mm.
ESCALA 1: 1



6

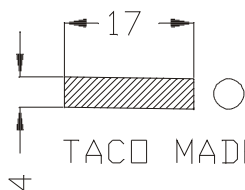
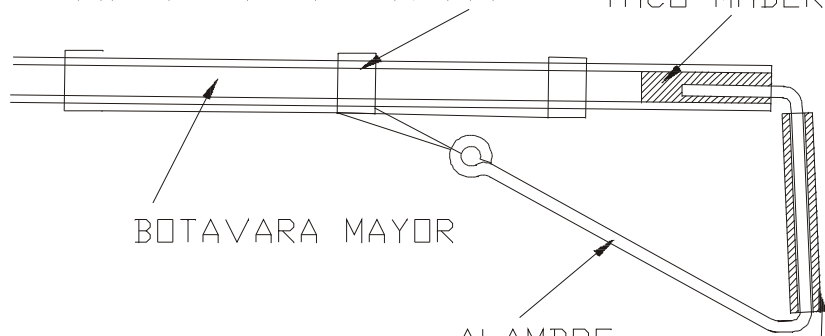
BRAZO SERVO
ESCALA 1: 1
ALUMINIO 2mm.



7

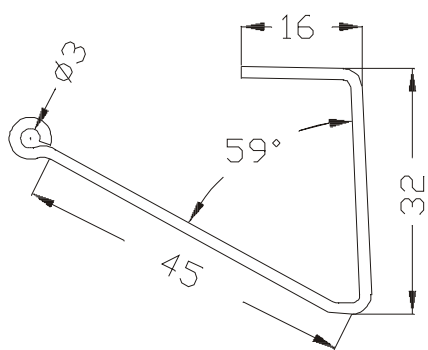
DETALLE GANSERA Y VANG ESCALA 1:1

REGULADORES DE BOTAVARA TACO MADERA

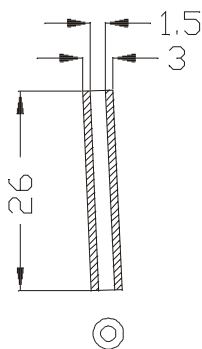


ALAMBRE
DIA=1.5 mm.
COBRE/BRONCE

BUJE DIA=3mm.



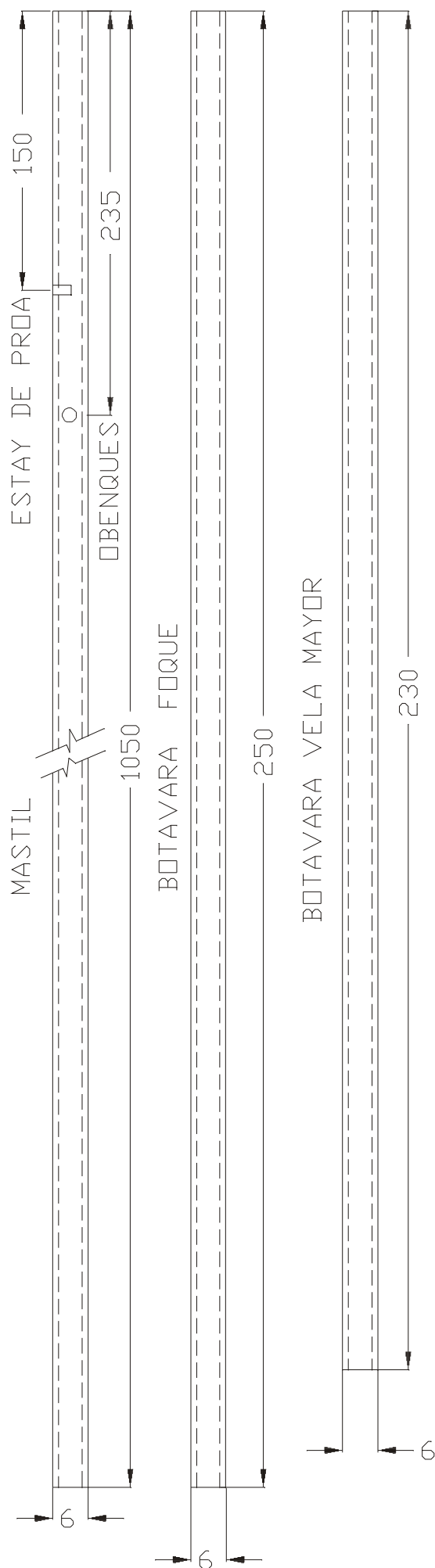
PLEGADO ALAMBRE
DIA=1.5 mm.



BUJE BRONCE/ALUM.
PLASTICO DIA=3mm.

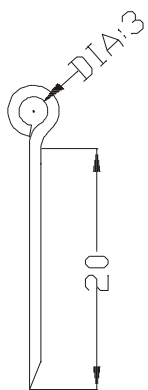
8

TUBO FIBRA CARBONO
O ALUMINIO
DIAMETRO EXT.=6mm



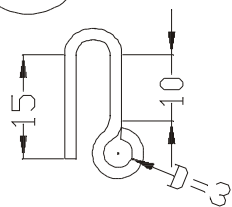
9

ARRAIGOS
A CUBIERTA
SIN ESCALA
CANT= 16



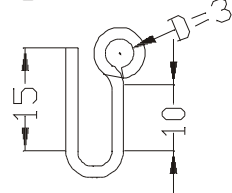
10

ARRAIGOS
AL MASTIL
SIN ESCALA
CANT=3



11

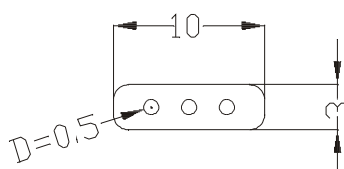
TERMINALES
INFERIORES
OBENQUES
S/ESCALA
CANT= 4



LOS ARRAIGOS Y TERMINALES SON DE ALAMBRE
DENTAL DE DIA.= 0,8 mm.

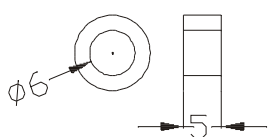
12

REGULADORES OBENQUES
PLASTICO E=2 mm.
SIN ESCALA
CANT= 6



13

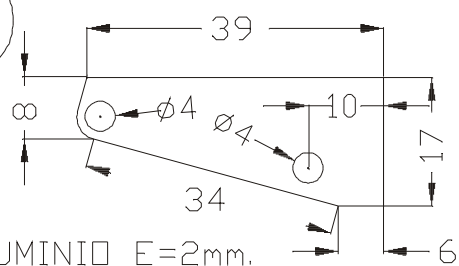
REGULADORES
BOTAVARAS
CANT= 9
SIN ESCALA



MANGUERA PLASTICA
DIA.INT.=6mm.

14

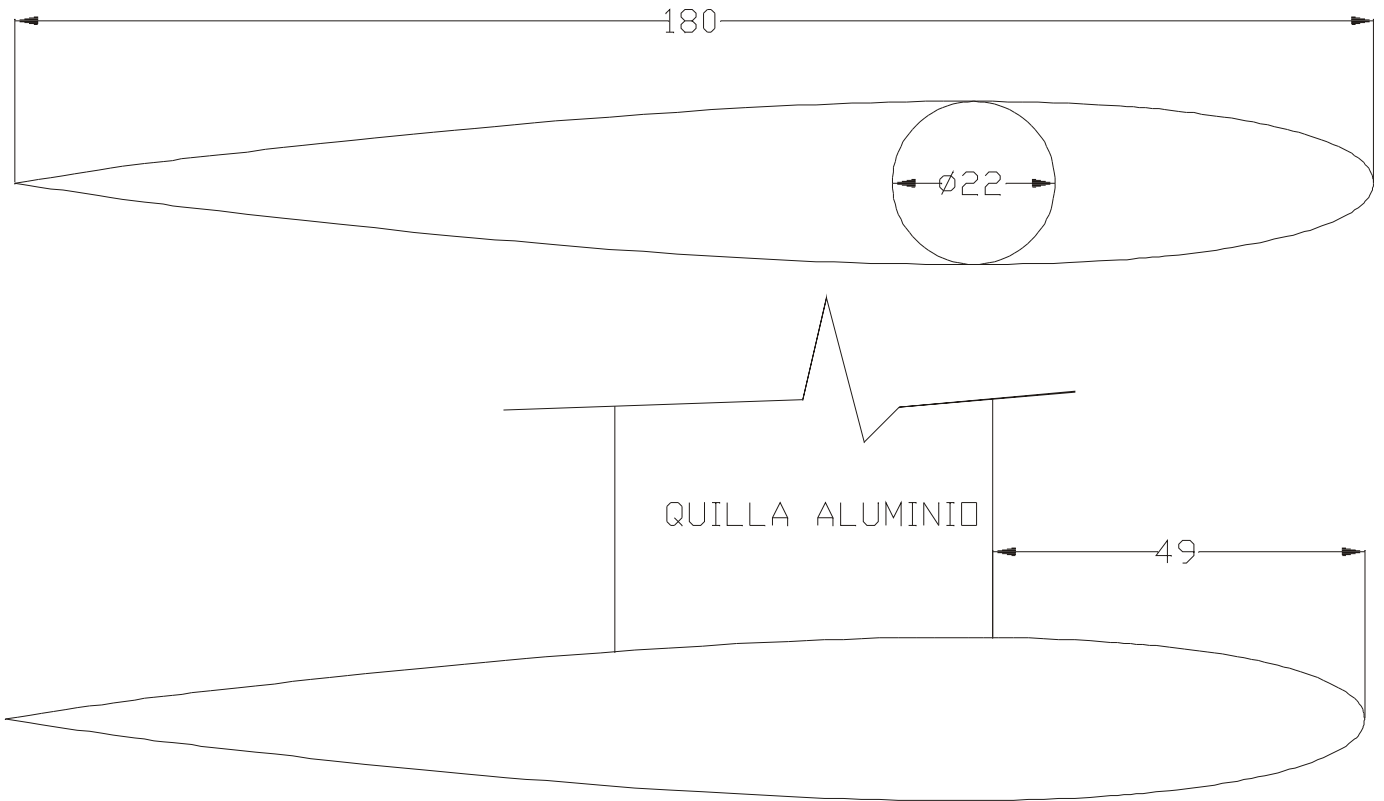
TOPE MASTIL-ESC. 1:1



ALUMINIO E=2mm.

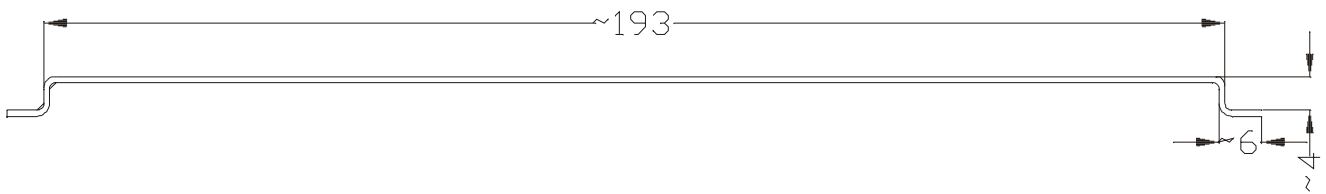
15

BULBO DE PLOMO- PESO APROX.=460 Gr.
ESCALA 1: 1



16

DETALLE PROLONGACION BRAZO TIMON
ALAMBRE COBRE/BRONCE/ACERO
DIA.=2mm. - SIN ESCALA



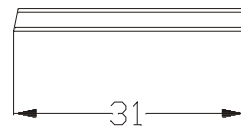
17

REENVIDO ESCOTAS
DIA.=2mm. - SIN ESCALA
TUBO PLASTICO



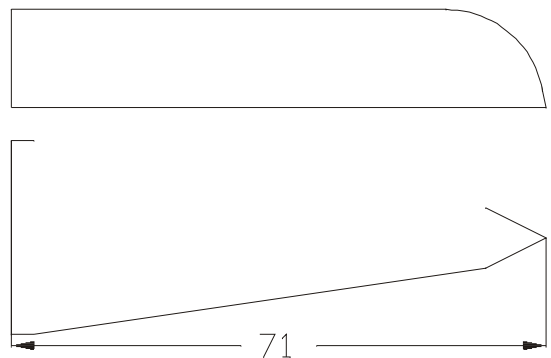
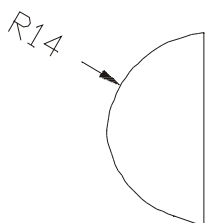
18

BUJE TIMON DIA.=2mm. -S/ESCALA
ALUM.-BRONCE



19

PROTECCION PROA
ESCALA=1:1



20

REFUERZO APOYO MASTIL
8 x 8 PINO/CEDRO

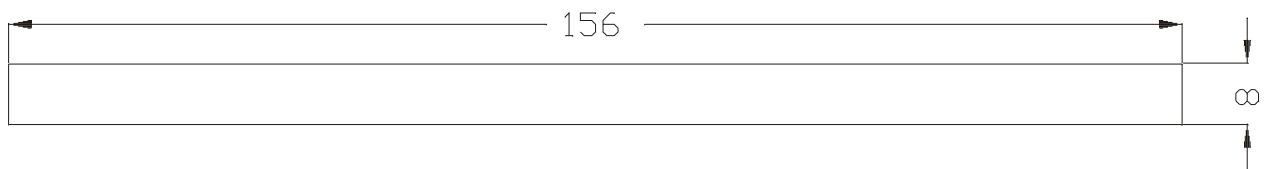
ESCALA=1:1



21

REFUERZO ESTAY DE PROA
8 x 8 PINO/CEDRO

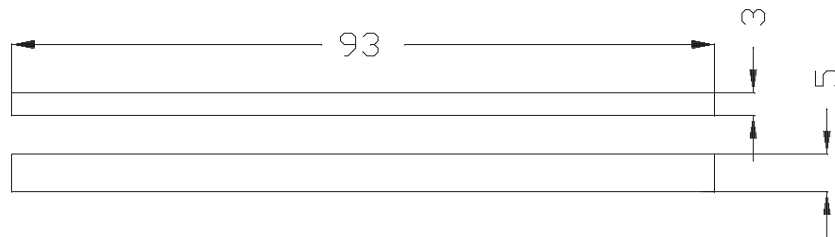
ESCALA=1:1



22

REFUERZO TAPA INSPECCION
5 x 3 BALSA - CANT=2

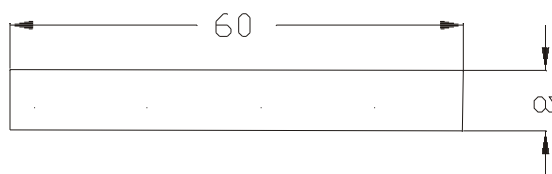
ESCALA=1:1



23

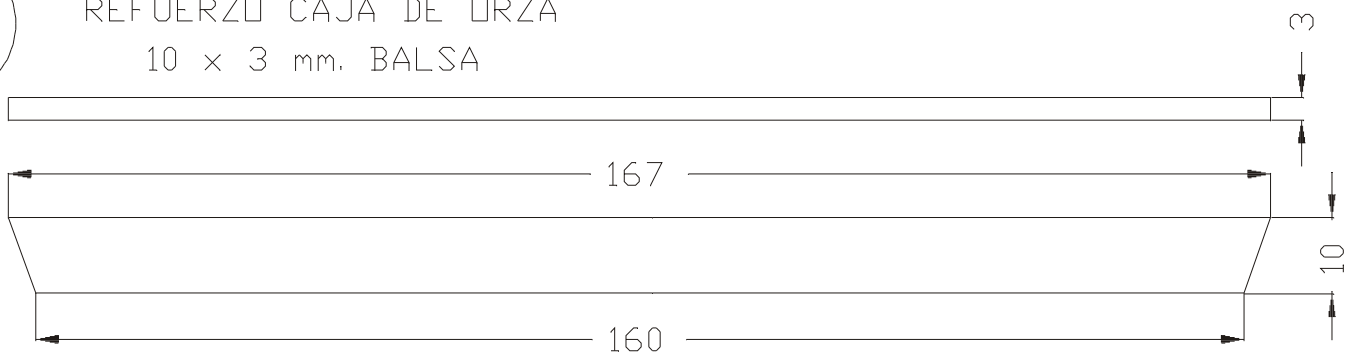
REFUERZO LANDAS
8 x 8 PINO/CEDRO - CANT=2

ESCALA=1:1



24

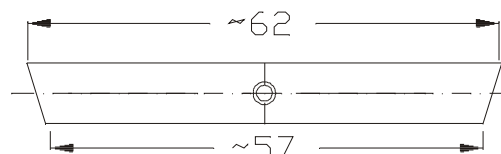
REFUERZO CAJA DE ORZA
10 x 3 mm. BALSA



25

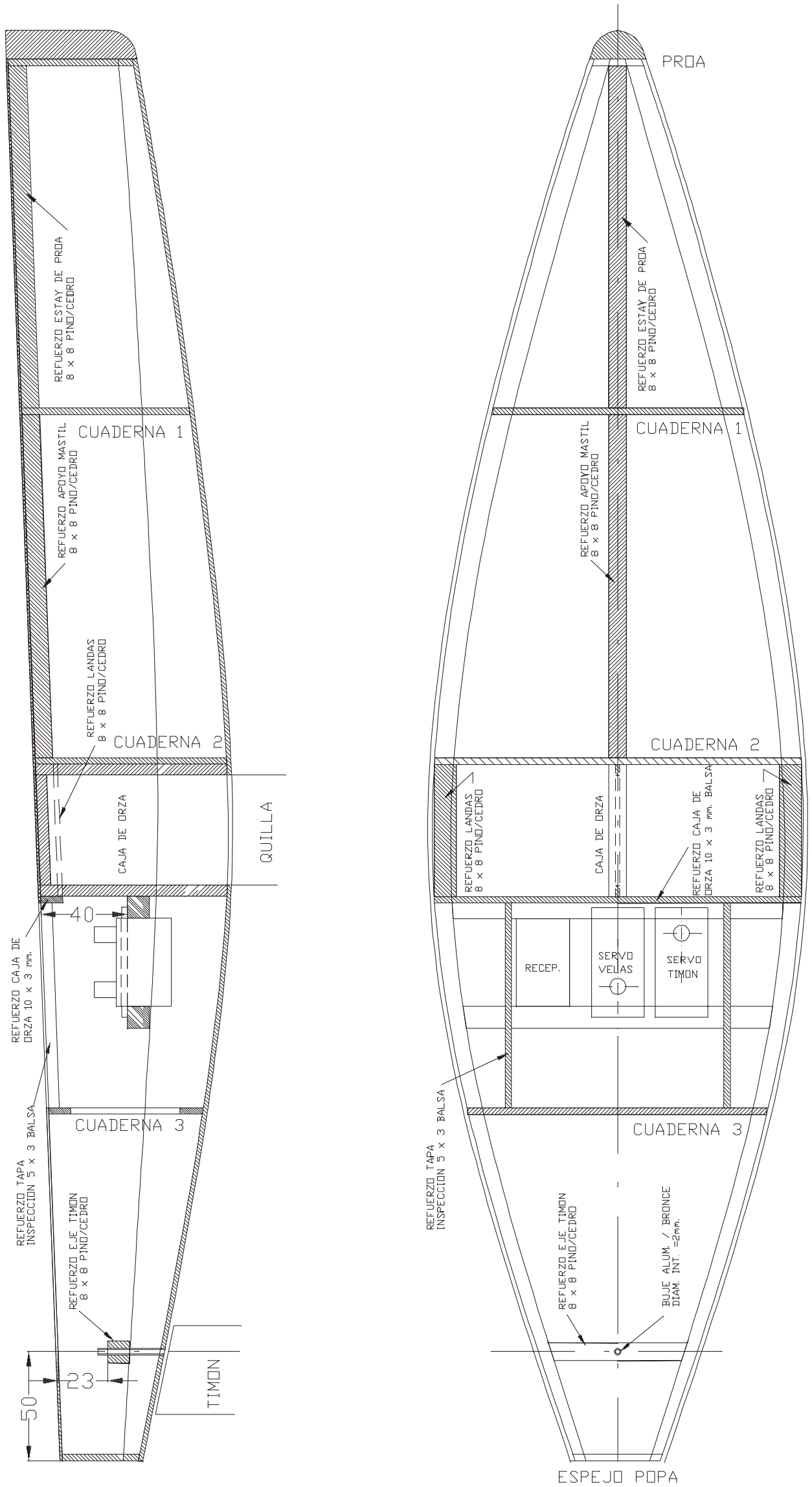
REFUERZO EJE TIMON
8 x 8 PINO/CEDRO

ESCALA=1:1

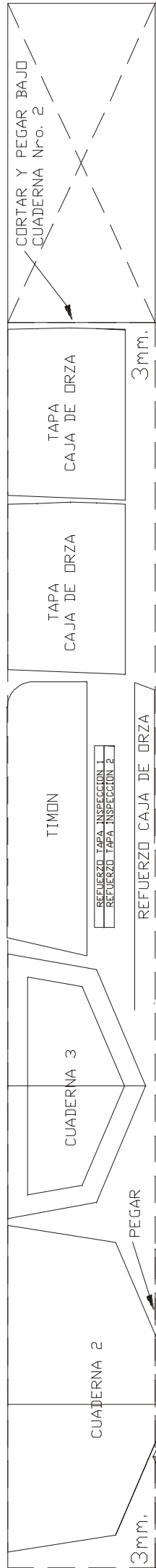
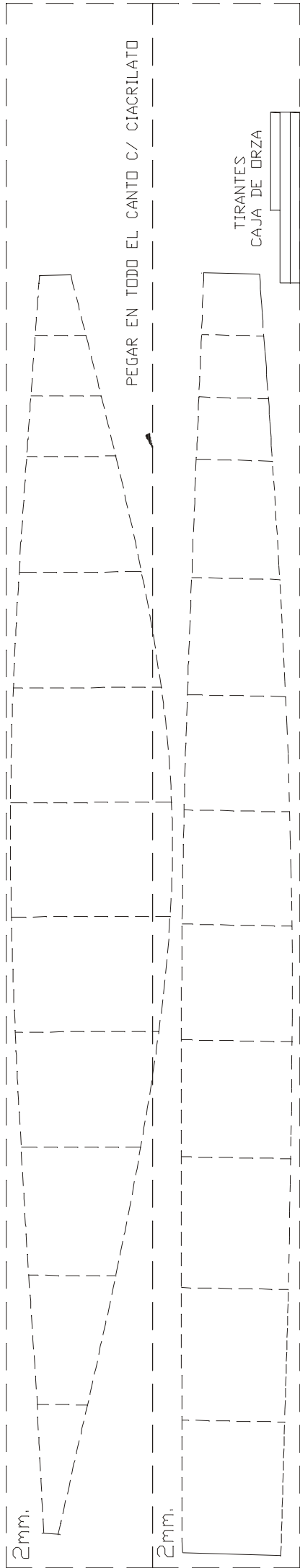
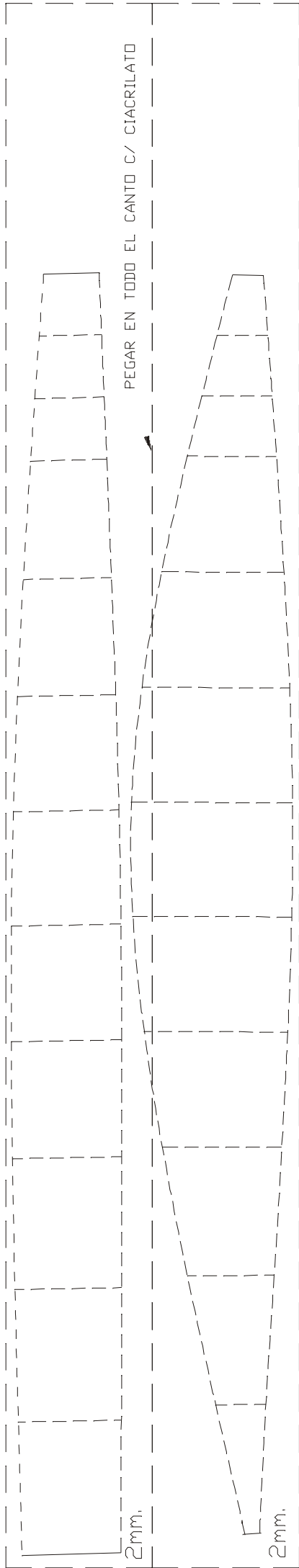
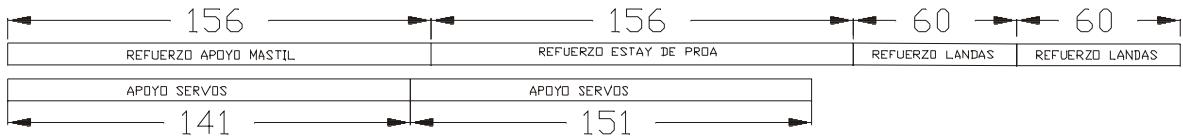


ESQUEMA DE ARMADO - PLANTA Y CORTE

3/ESCALA



MADERA DE PINO / CEDRO 8 x 8 mm. TOTAL= ~750mm



NOTA: LAS TABLAS DE MADERA BALSA SE CONSIDERAN DE 75mm. x 800 mm. EN EL CASO DE DISTINTAS MEDIDAS REUBICAR LAS PIEZAS PARA SU MEJOR APROVECHAMIENTO.

TOTAL MADERA BALSA
4 DE 2 mm.
1 DE 3 mm.

