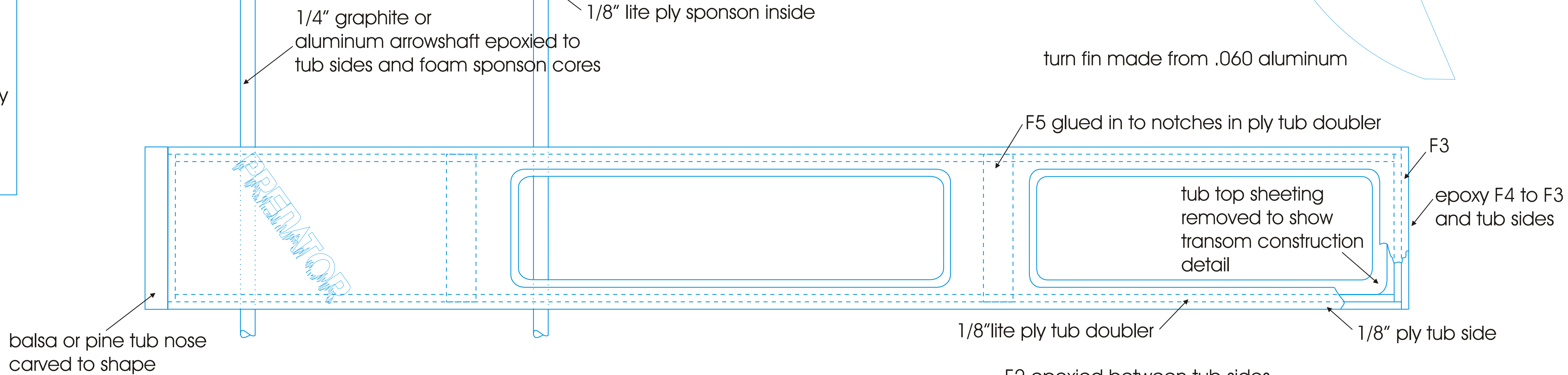
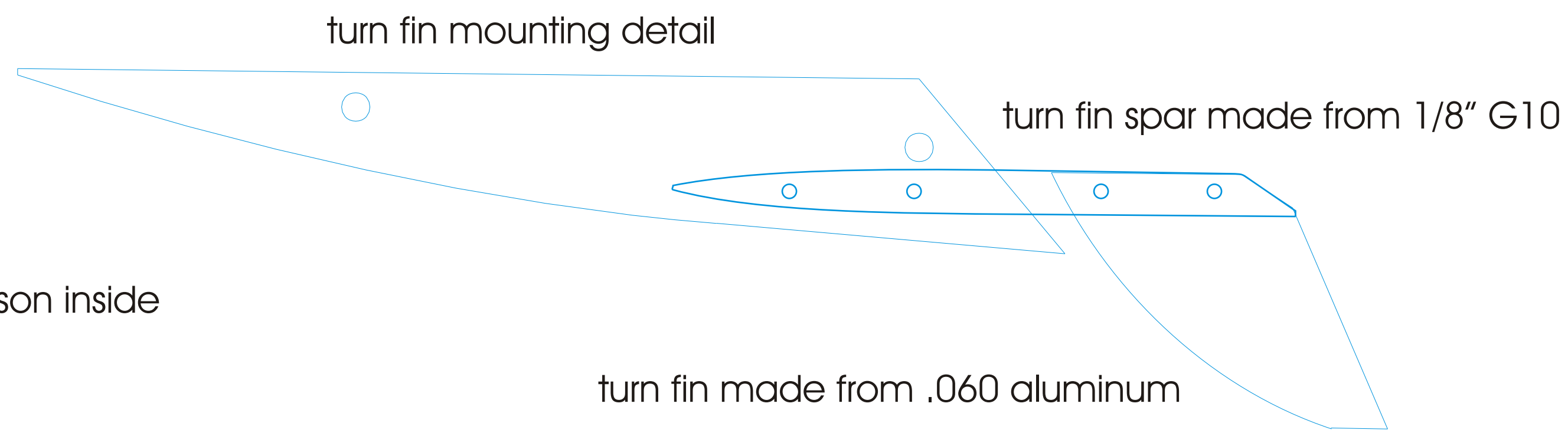
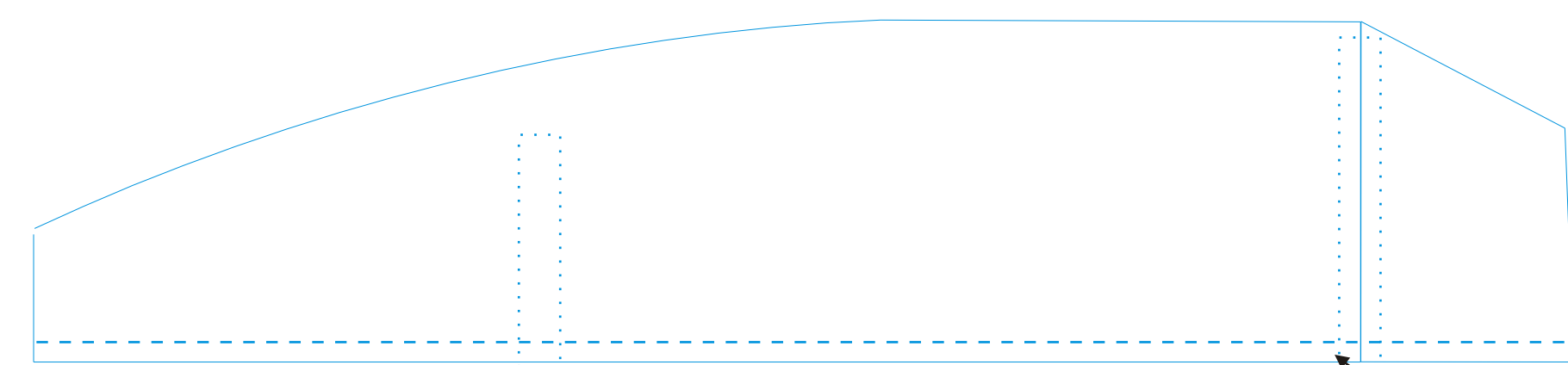


PRENATOR OUTRIGGER

Building notes

- ~ All parts required to build this model are shown on the plans.
- ~ Only one piece is required unless otherwise noted.
- ~ Use the sponson insides and top and bottom sheeting as templates to cut the foam sponson cores.
- ~ Sponson boom tubes are shown as 1/4" arrowshaft.
- ~ Tub sides can be hard balsa or light ply.
- ~ Build light for extra speed. Seal all parts with thinned epoxy to fill grain before adding final color and decals.
- ~ Fullers hydro hardware, Octura hardware, or Speedmaster can be used.



rear sponson bottom. 1/32" ply. 2 req.

rear sponson back. 1/32" ply. 2 req.

rear sponson top. 1/32" ply. 2 req. rear sponson outside. 1/32" ply. 2 req.

1/8" lite ply sponson inside (2 req.)

rear sponson inside. 1/32" ply. 2 req.

all boom tube holes are shown 1/4" Holes can be made larger for different sized tubes.

1/8" hard balsa or light ply. tub side (2 req.)

1/8" lite ply forward tub side doubler (2 req.)

1/8" lite ply rear tub side doubler (2 req.)

tub bottom. 1/32" ply.

tub top. 1/32" ply.

cut out hatch openings and save cut out for hatch

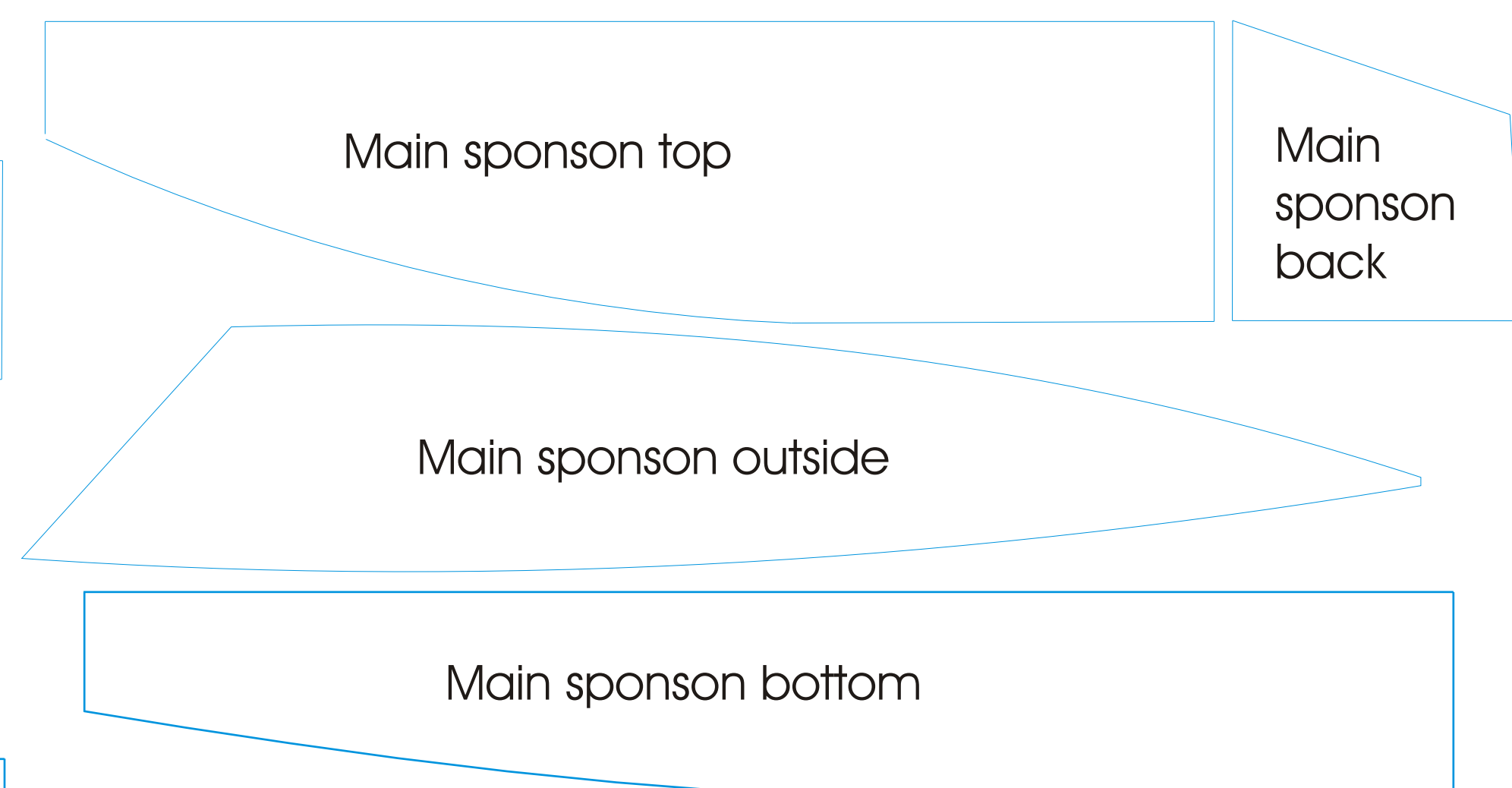
glue 1/8" ply tub doublers to tub sides with epoxy

rear sponsons glued to underside of main tub

F2 epoxied between tub sides

Fullers hardware shown. Other set up's will work.

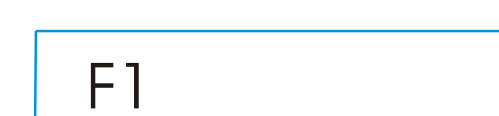
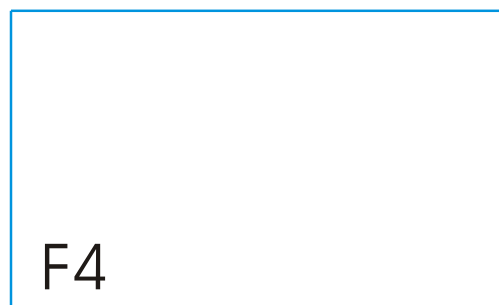
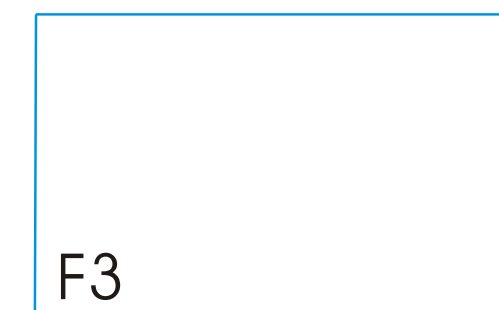
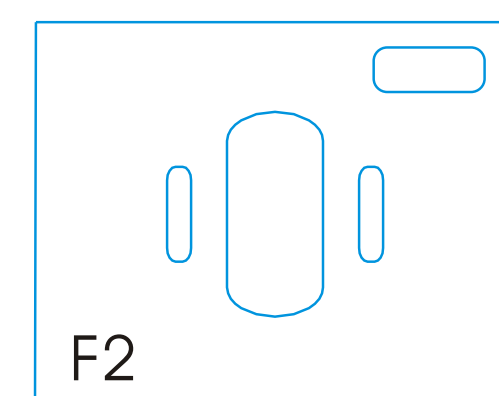
stuffing tube position



Main sponson parts. 1/32" ply. 2 of each required

front hatch rail. 1/32" ply.

rear hatch rail. 1/32" ply.



tub formers. all parts are 1/8 lite ply.

PRENATOR OUTRIGGER
BY CLIMATE MODELS

A sport outrigger for .05 brushed or brushless motors and 6-8 cells

Designed by Peter Richards

© Jan, 2004