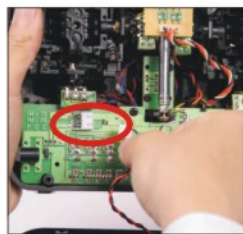


# 发射机左右手对换

The exchange of left and right operating rods



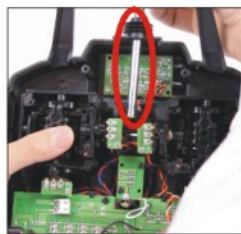
1. 打开背后四个螺丝  
Open the rear four screws.



2. 取下电源开关  
Unload the power switch.



3. 取下教练接口  
Unload the trainer interface.

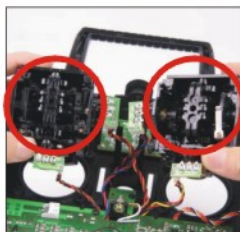


4. 取下天线  
unload the antenna.

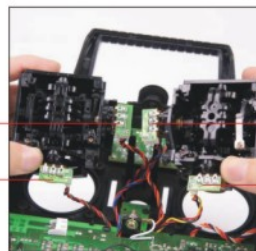


5. 取下左右操纵杆  
四个螺丝  
Unload the four screws of

右操纵杆组  
the right operating rod.



左操纵杆组  
the left operating rod.



通道 2  
Channel 2

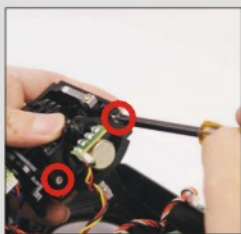
通道 1  
Channel 1

通道 3  
Channel 3

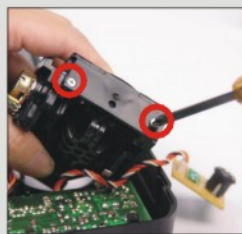
通道 4  
Channel 4

6. 取下左右操纵杆组

Unload the left and right operating rod sets.



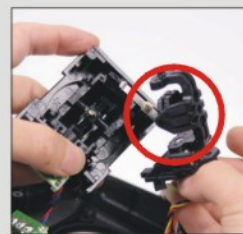
图一



图二

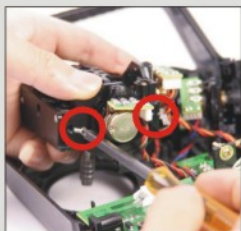


图三



图四

7. 取下左操作纵组上的四通道  
Unload the fourth channel of left operating rod set.



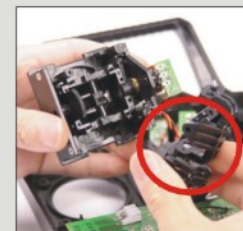
图一



图二

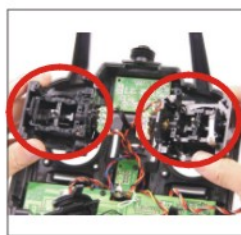


图三



图四

8. 取下右操纵杆组上的一通道  
Unload the first channel of right operating rod set.



9. 取下一四通道后的操纵杆组  
the operating rod set without the first  
and fourth channels.



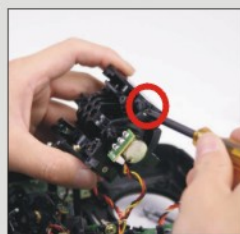
10. 取下一四通道后的操纵杆组对换  
exchange the operating rod sets without the  
first and fourth channels.



图一



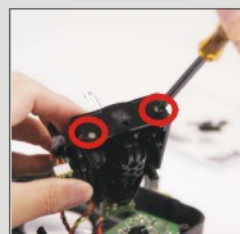
图二



图三



图四

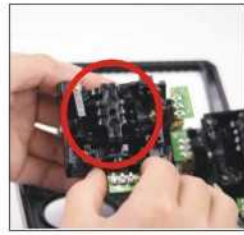


图五

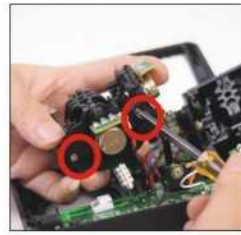
11. 将刚刚取下的四通道装上刚对换过来操纵杆组上  
Assemble the unloaded first channel on the exchanged operating rod set.



图一



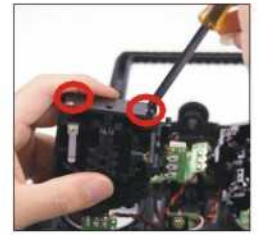
图二



图三



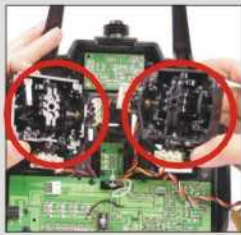
图四



图五

12. 将刚刚取下的一通道装上刚对换过来操纵杆组上

Assemble the unloaded fourth channel on the exchanged operating rod set.



13. 对换后的左右操纵杆组, 放好后再锁紧螺丝

Lockup the screws tightly after assembling the exchanged right and left operating rod sets.



14. 将教练接口装回原位  
Assemble the trainer interface  
on the same place.

15. 装上天线  
Assemble the antenna.

16. 接好电源开关  
Connect the power switch.

17. 锁紧螺丝  
Lockup the screws tightly.



18. 改好后的发射机  
The modified transmitter.

## 注意事项 NOTE

伺服器倒置开关  
Servo reversing switches



左手  
Left



右手  
Right

四通道发射机  
Four channels transmitter

伺服器倒置开关  
Servo reversing switches



左手  
Left



右手  
Right

六通道发射机  
Six channels transmitter