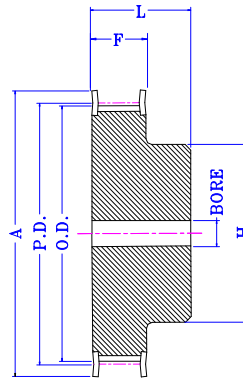
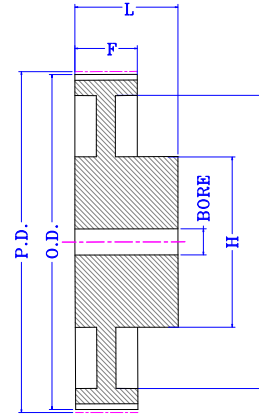


# High Torque Sprockets 5mm



Type 1F



Type 2

Pilot Bore 15mm Wide Belts (5M-15)																
No. Teeth	No. Teeth	Catalog Number	Bore	Pitch	Diameter(mm)		Type+	Max. Bore	Dimensions(mm)						Weight* Approx. (Kg)	Product Material
					O.D.	Flange(A)			F	G	K	L	M	H		
350-6494	12	P12 5M15F	4	19.10	17.96	25.0	1F	8.0	20.5	-	-	26.0	-	13.0	0.03	C45
350-6501	14	P14 5M15F	6	22.28	21.14	25.0	1F	9.0	20.5	-	-	26.0	-	13.0	0.05	C45
350-6517	15	P15 5M15F	6	23.87	22.73	28.0	1F	11.0	20.5	-	-	26.0	-	16.0	0.06	C45
350-6523	16	P16 5M15F	6	25.46	24.32	28.0	1F	13.0	20.5	-	-	26.0	-	16.0	0.06	C45
350-6539	18	P18 5M15F	6	28.65	27.51	32.0	1F	14.0	20.5	-	-	26.0	-	19.0	0.09	C45
350-6545	20	P20 5M15F	6	31.83	30.69	36.0	1F	15.0	20.5	-	-	26.0	-	23.0	0.11	C45
350-6551	21	P21 5M15F	6	33.42	32.28	38.0	1F	16.0	20.5	-	-	26.0	-	24.0	0.13	C45
350-6567	22	P22 5M15F	6	35.01	33.87	38.0	1F	18.0	20.5	-	-	26.0	-	25.5	0.14	C45
350-6573	24	P24 5M15F	6	38.20	37.06	42.0	1F	19.0	20.5	-	-	28.0	-	27.0	0.18	C45
350-6595	26	P26 5M15F	6	41.38	40.24	44.0	1F	20.0	20.5	-	-	28.0	-	30.0	0.22	C45
350-6602	28	P28 5M15F	6	44.56	43.42	48.0	1F	20.0	20.5	-	-	28.0	-	30.5	0.25	C45
350-6618	30	P30 5M15F	6	47.75	46.60	51.0	1F	24.0	20.5	-	-	28.0	-	35.0	0.30	C45
350-6624	32	P32 5M15F	8	50.93	49.79	54.0	1F	26.0	20.5	-	-	28.0	-	38.0	0.34	C45
350-6630	36	P36 5M15F	8	57.30	56.16	60.0	1F	28.0	20.5	-	-	28.0	-	38.0	0.43	C45
350-6652	40	P40 5M15F	8	63.66	62.52	71.0	1F	28.0	20.5	-	-	28.0	-	38.0	0.53	C45
350-6668	44	P44 5M15	8	70.03	68.89	-	2	28.0	20.5	50.0	-	30.0	-	38.0	0.23	HT250
350-6674	48	P48 5M15	8	76.39	75.25	-	2	28.0	20.5	55.0	-	30.0	-	38.0	0.27	HT250
350-6680	60	P60 5M15	8	95.49	94.35	-	2	38.0	20.5	72.0	-	30.0	-	50.0	0.31	HT250
350-6696	72	P72 5M15	8	114.59	113.45	-	2	38.0	20.5	90.0	-	30.0	-	50.0	0.40	HT250