

Flat bed units

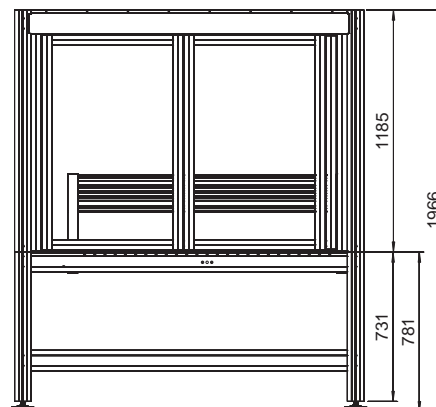
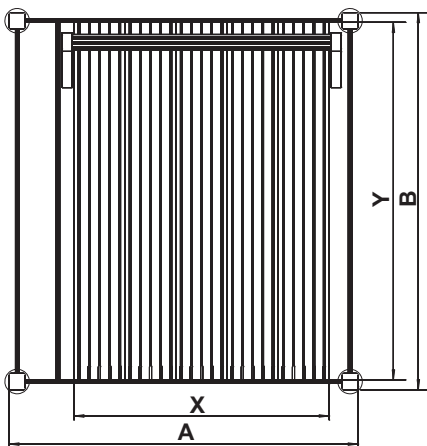
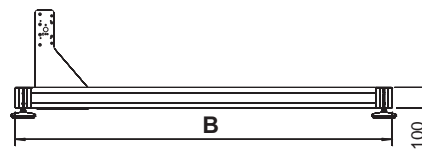
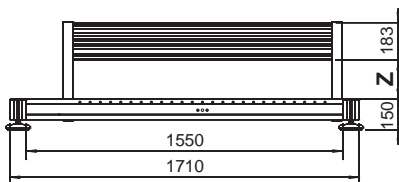


Flat bed unit with Z axis

General note

Flatbed units as defined in the machine guidelines as incomplete machines according to the modular system with processing paths of 250 to 1250 mm. Step motors (MS200HT), set for no-play, are used as spindle drives. Recirculating ball drives with a repeatability of ± 0.02 mm (positioning reproducibility) are used. The linear guides used are the isel double track feeds, proven over many years, with no-play pre-stressed linear ball bearings and recirculating ball spindles with a repeatability of ± 0.02 mm. All units are equipped with two limit switches per spindle. The machining and positioning units are available in a number of versions and are characterised by smooth running and high process speeds. The use of high quality aluminium components with flat-milled surfaces achieves low weight and high accuracy. isel X/Y/Z units are the ideal basis for setting up machines and systems for fitting and assembling, pressing and engraving, drilling and milling, milling and screwing, shaping and modelling, bonding and casting, soldering and welding, measuring and checking, sawing and cutting, etc..

Dimensioned drawings



Flat bed units

X/Y flatbed units FB2

Part no.	Chassis A × B (mm)	Clamping surface X × Y (mm)	process travel X × Y (mm)	Z gap (mm)
246203M	1210 x 946	750 x 850	530 x 500	190
246203 2040M	1210 x 1196	750 x 1100	530 x 750	
246203 2054M	1210 x 1446	750 x 1350	530 x 1000	
246203 2067M	1460 x 1446	1000 x 1350	780 x 850	
246203 2130M	1710 x 1846	1250 x 1750	1030 x 1250	

All flatbed units are fitted with **16 x 4 mm recirculating ball** drives as standard



Z axes for flatbed units

Part no.	Lift (mm)	
230514M	75	with magnet brake 24 V
230514 0400M	160	with magnet brake 24 V

Underframes

Part no.	suitable for flatbed unit With clamping surface:
248500 0027	750 x 850
248500 0040	750 x 1100
248500 0054	750 x 1350
248500 0067	1000 x 1350
248500 0130	1250 x 1750

Accessories

Part no.	
219200 0001	Energy guidance chain

Software

Part no.	
Z11 - 333 500 Z13 - 337 030	ProNC software isy-CAM 2.5 Plus

Options

- Appropriate Controller (e.g.: iMC-S8)
- Software modules for operating in CAM, CNC and SPS applications
- Frame
- Housing
- Spindle motors (see pages 5-18 et seq.)
- Gap: 300 and 500 mm respectively



Housings

Part no.	suitable for flatbed units with clamping surface:
248200 0000	750 x 850
248200 2040	750 x 1100
248200 2054	750 x 1350
248200 2067	1000 x 1350
248200 2130	1250 x 1750