

- #01 x14
- #02 x2
- #03 x2
- #04 x2
- #05 x2
- #06 x2
- #07 x2

This wing is a D-box construction using twin spars and double webbing.

- Leading edge is 6mm square medium
- Ribs are 1.5mm medium
- Spars are 2.4mm hard
- Sheeting is 1.5mm medium
- Trailing edge is 3.2mm x 20mm medium
- Webbing is 1.5mm medium
- V braces are 3.2mm + 2.4mm laminated medium-hard

When building this wing, apply bottom sheeting last, after you have installed the inner webbing and the V-braces.

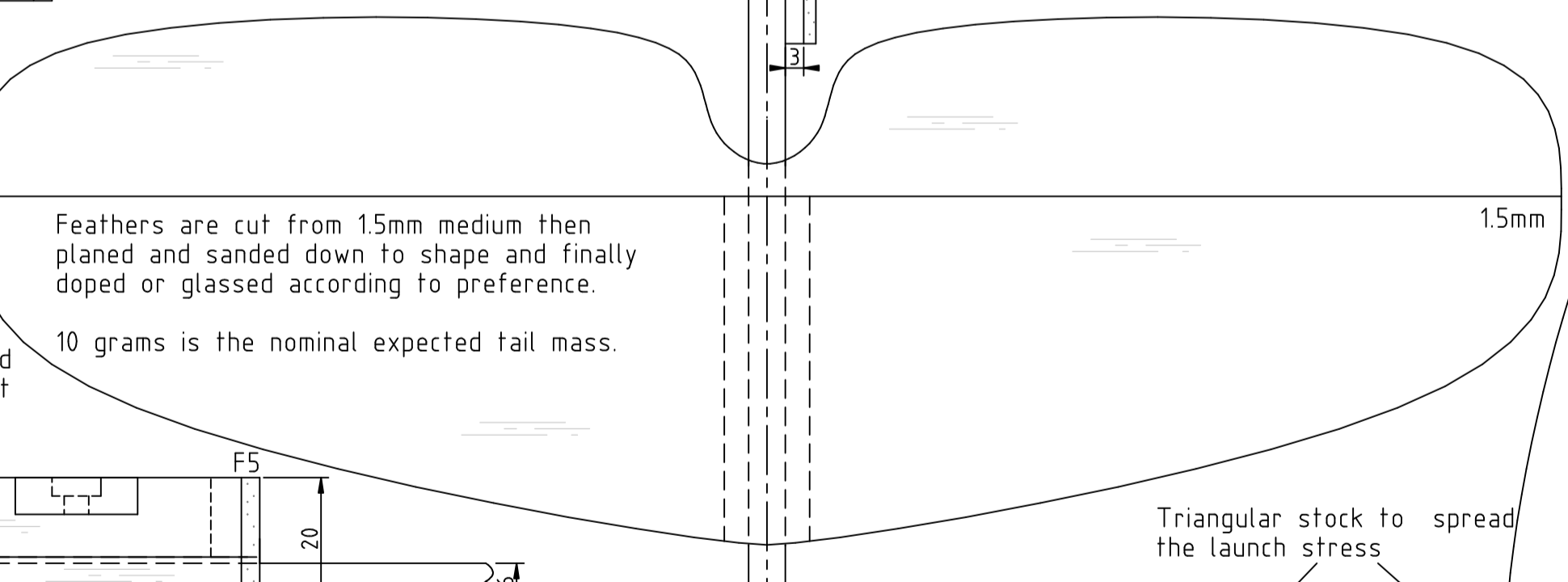
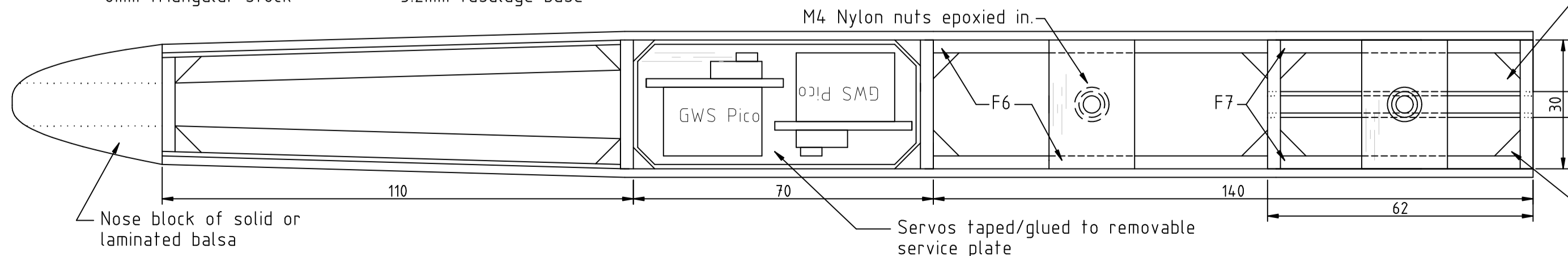
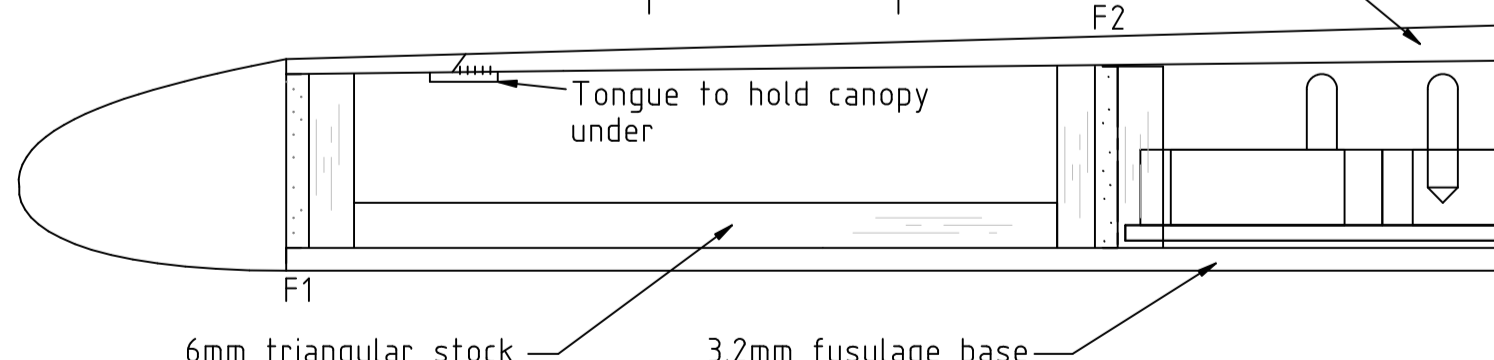
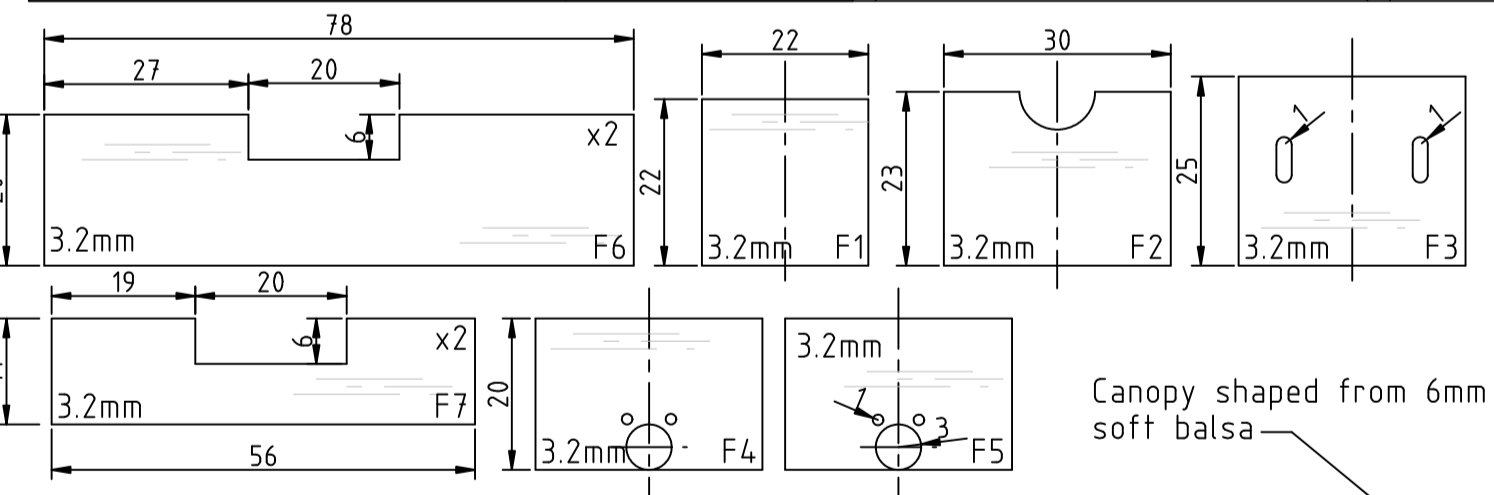
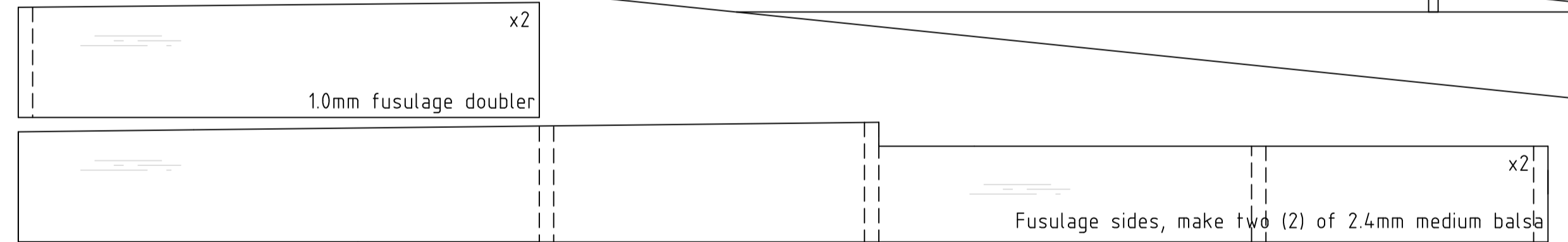
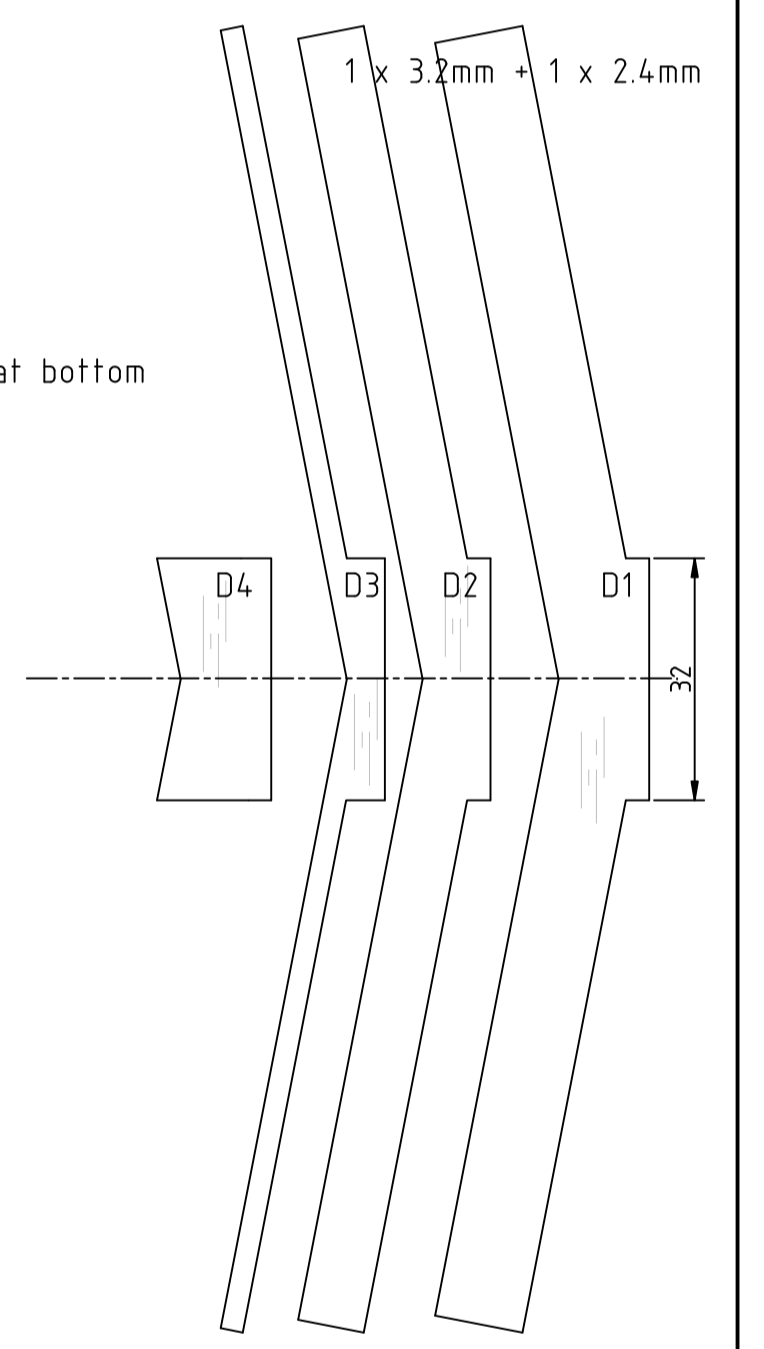
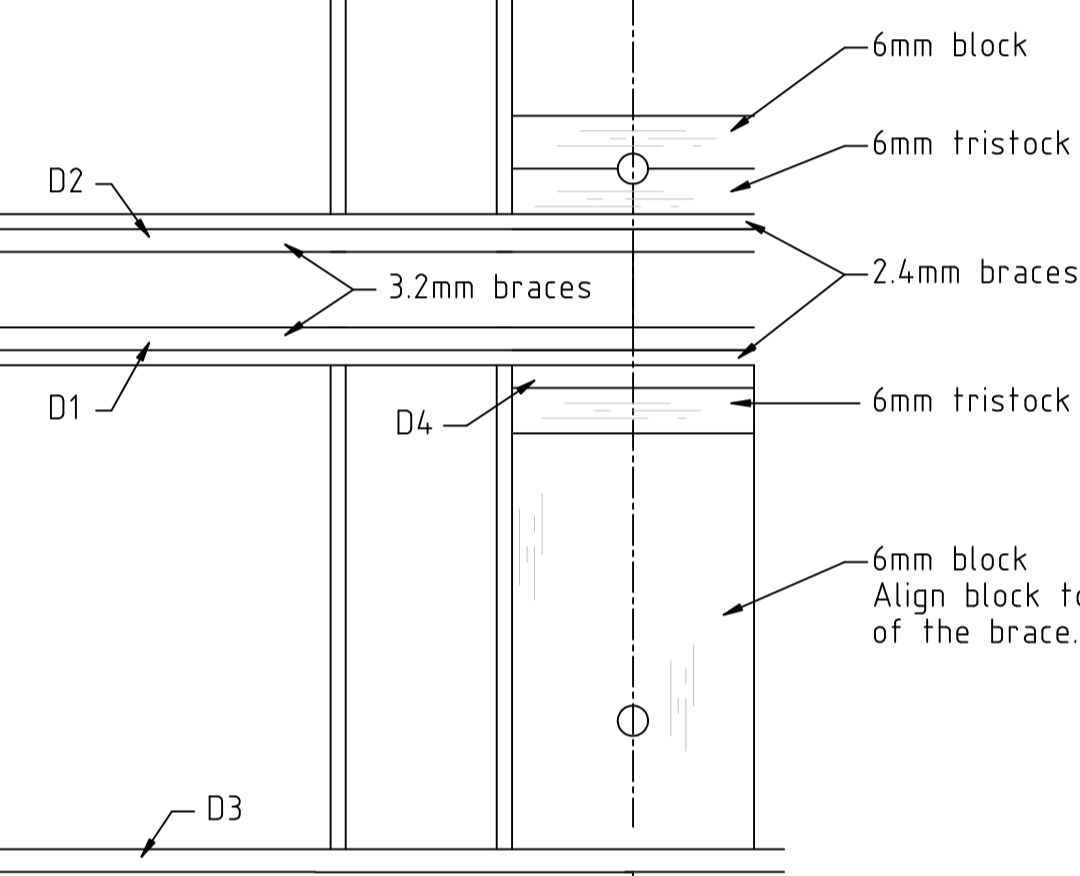
Make sure you align the sheeting to butt against the leading edge stock first. Bevel the edge of the sheet to align with the LE.

Launch peg area. Harden balsa by putting pin holes around the peg and soaking with CA.

1.5mm tips
Add 1.5mm doubling sheet on top

10x2.4mm balsa tip spar supports (top and bottom)

Carbon tow applied on both top and bottom after Dbox sheeting has been applied.

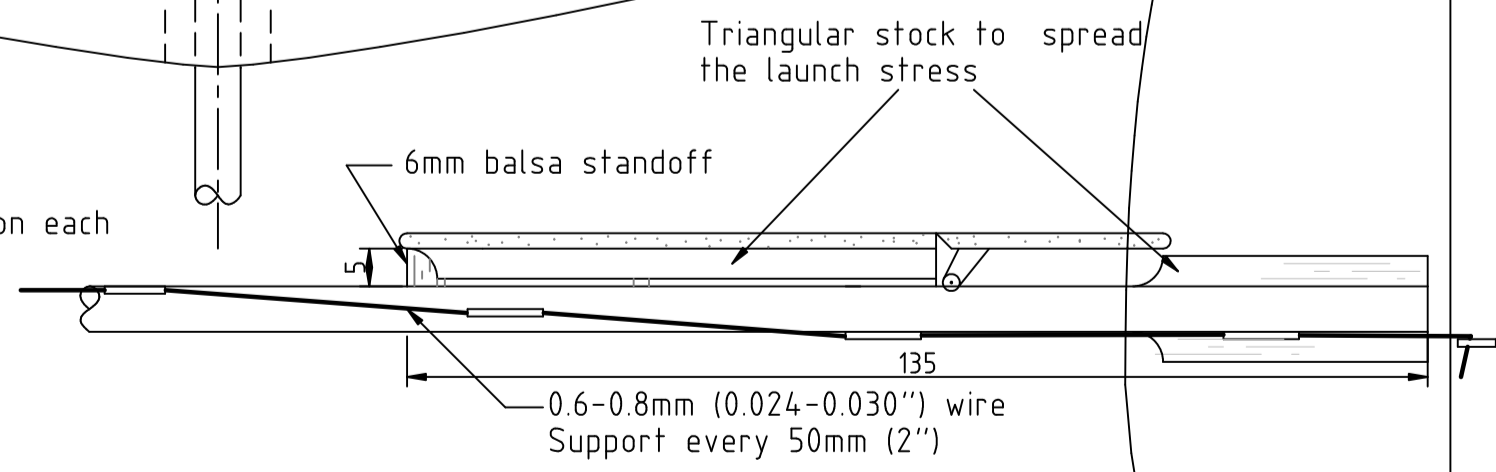


Feathers are cut from 1.5mm medium then planed and sanded down to shape and finally doped or glassed according to preference.
10 grams is the nominal expected tail mass.

Note that nut is applied on underside to prevent pulling out.

Align and glue boom in before applying bottom fuselage sheeting.

Cut CF boom to a length of 560mm



Tail hinges are thin clear plastic tape

NOTE - the dihedral brace needs to be extremely strong to handle the launch loads. The multilayer balsa braces are stronger than one single 5mm thick brace due to the grain mixing.
Most braces fail due to splitting along the grain. The ply effect along with good gluing will minimise this effect.

QuickFlick-II DLG	
Target Weight: 180-210g / 7.0oz	All dimensions are in 'mm' unless otherwise indicated.
Wing span: 1270mm / 50"	
Chord: 150mm / 6"	
Wing area: 16.8dm ² / 1.8 ft ²	All balsa is medium grade unless otherwise indicated.
Revision: 03,2005052501	
Copyright © Paul L Daniels 2005 This plan can only be sold by PLDaniels.	
http://www.pldaniels.com/flying pldaniels@pldaniels.com	