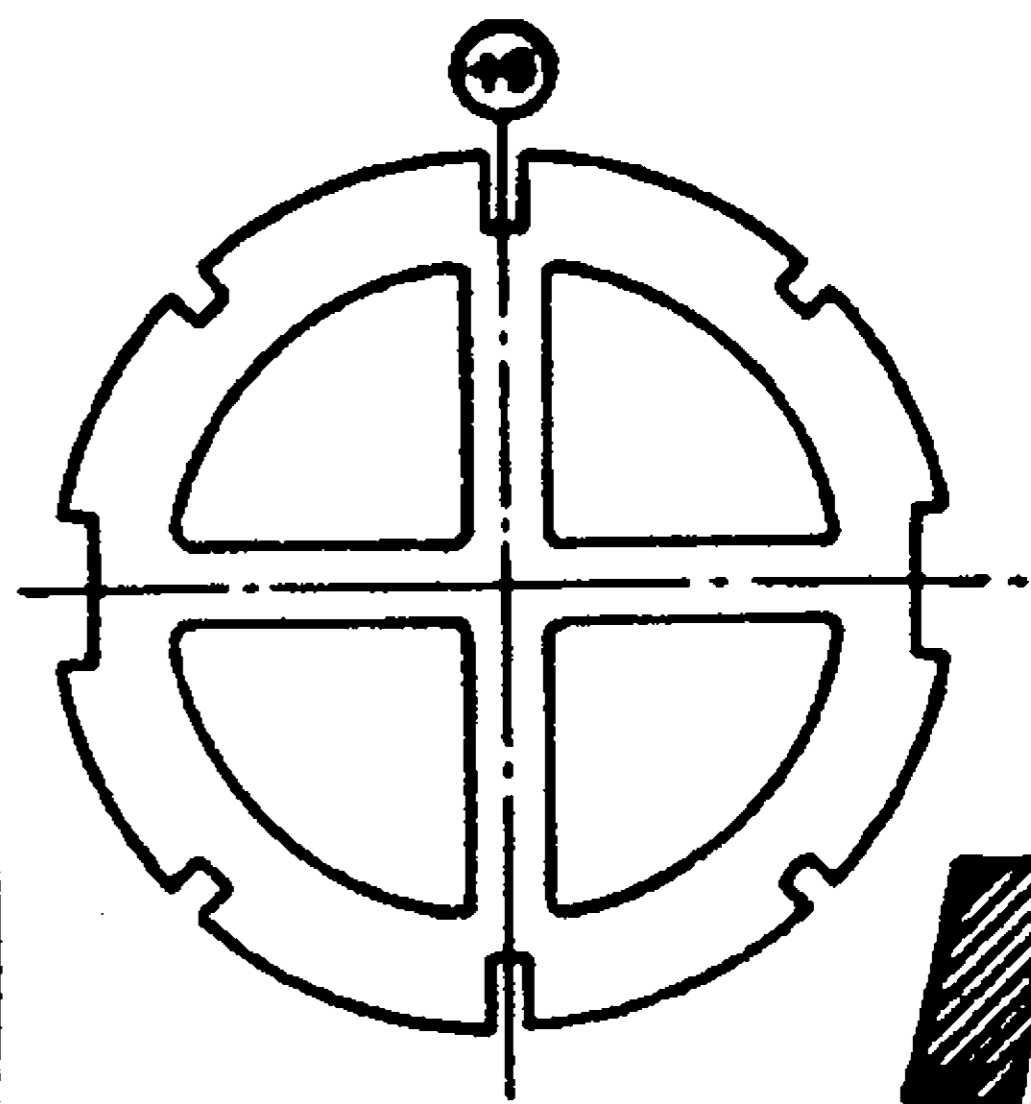
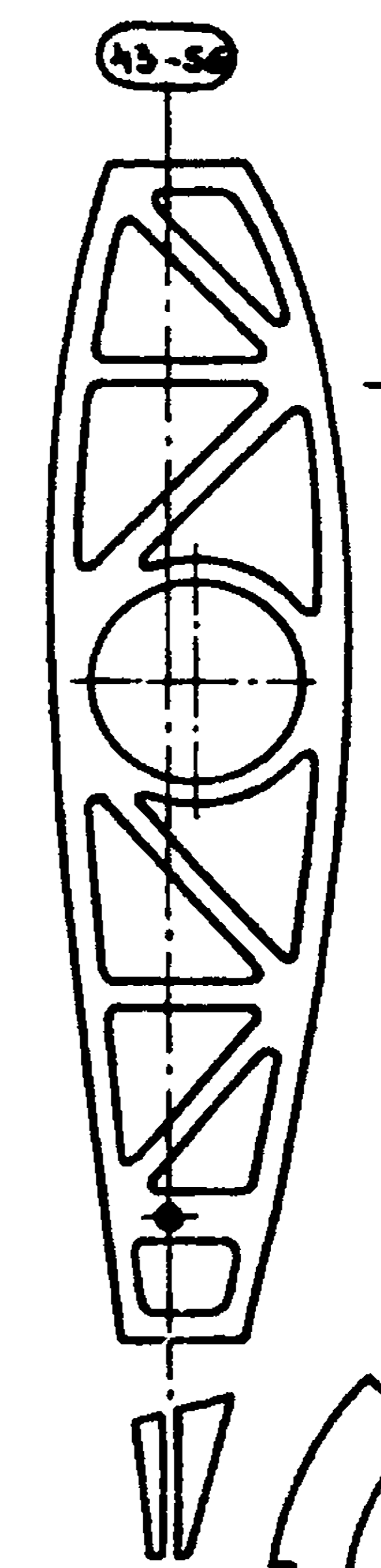
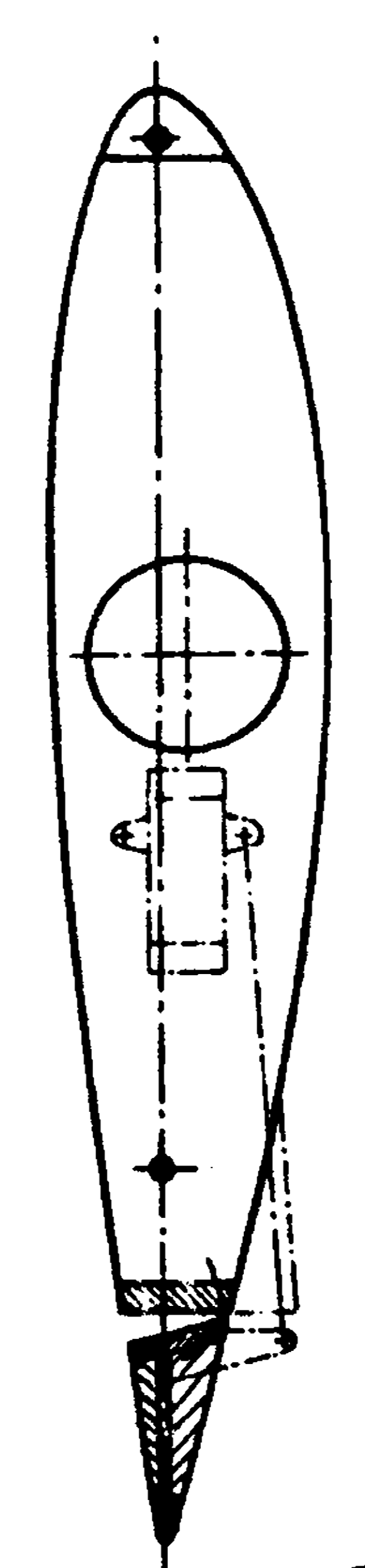
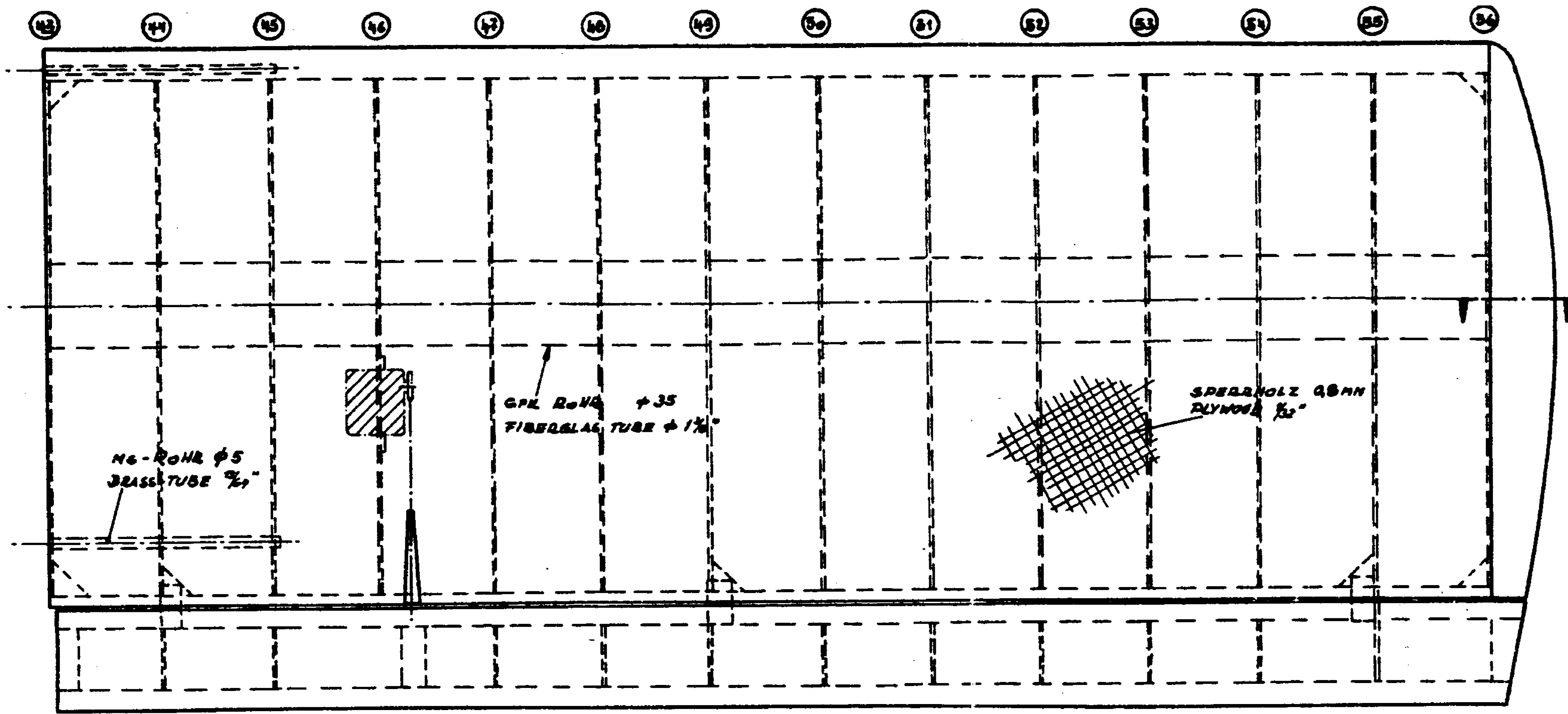


KRIZ Fieseler Fi 103 SERIE REICHENBERG IV BLAST I

DATEN		ORIGINAL		MODELL	
WING SPAN	SPANNWEITE	19'-9"	5,71 M	5'-4 1/8"	1,63 M
OVERALL LGTH.	LÄNGE	26'-3"	8,00 M	7'-6 1/2"	2,285 M
WEIGHT	GEWICHT	4960 LB	2250 KG	13,2 LB	6,00 KG
ENGINE	MOTOR	ARGUS PULSEJET		ARGUS SCHUBROHR	



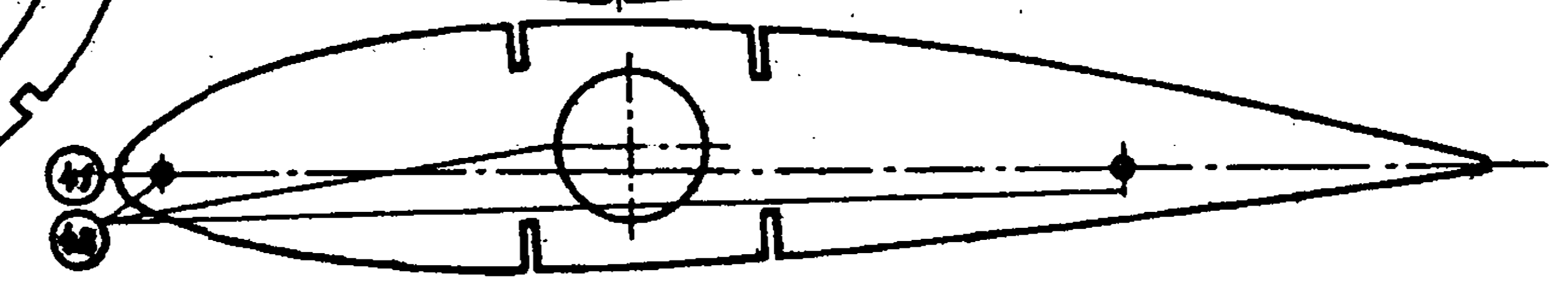
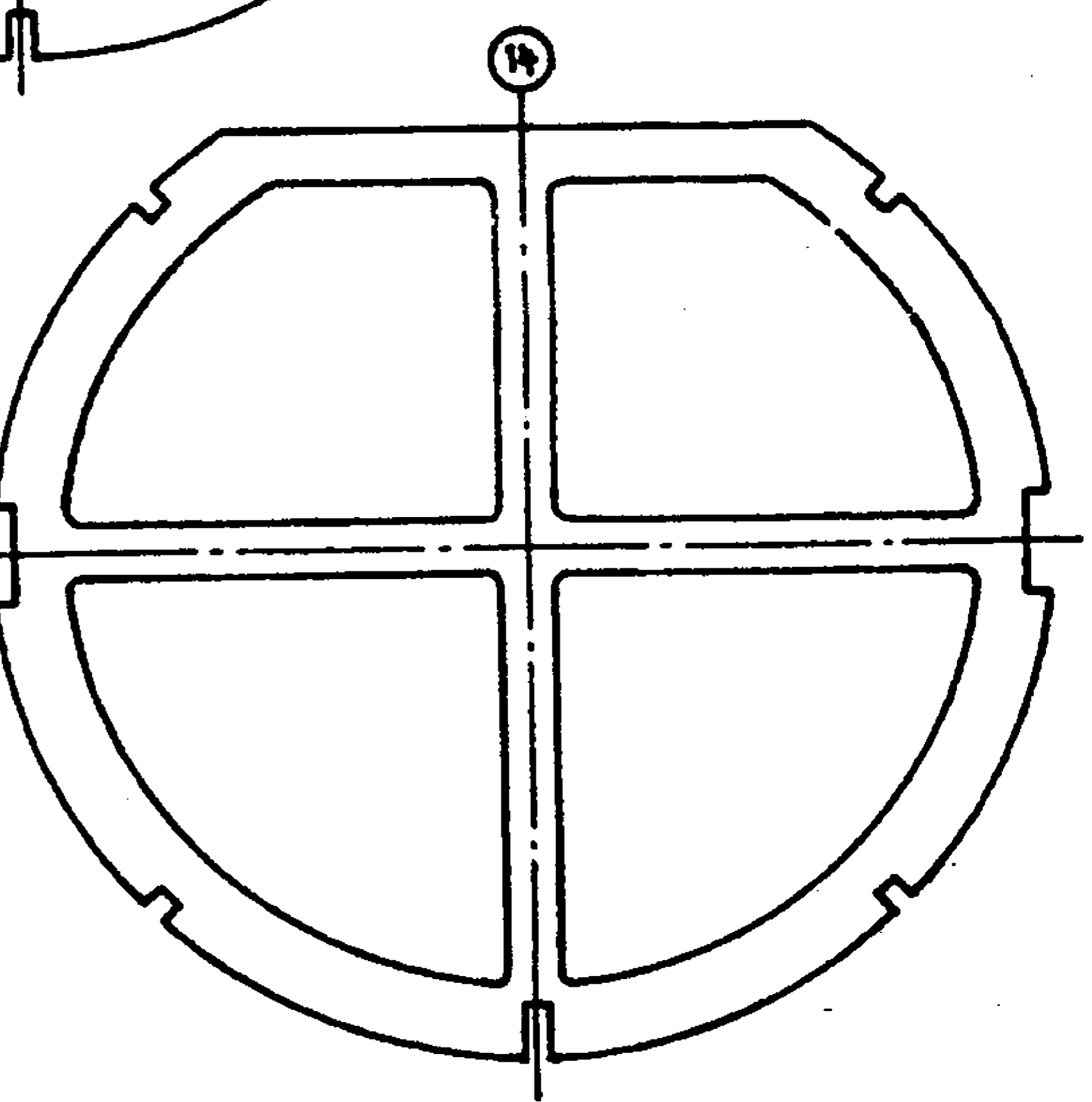
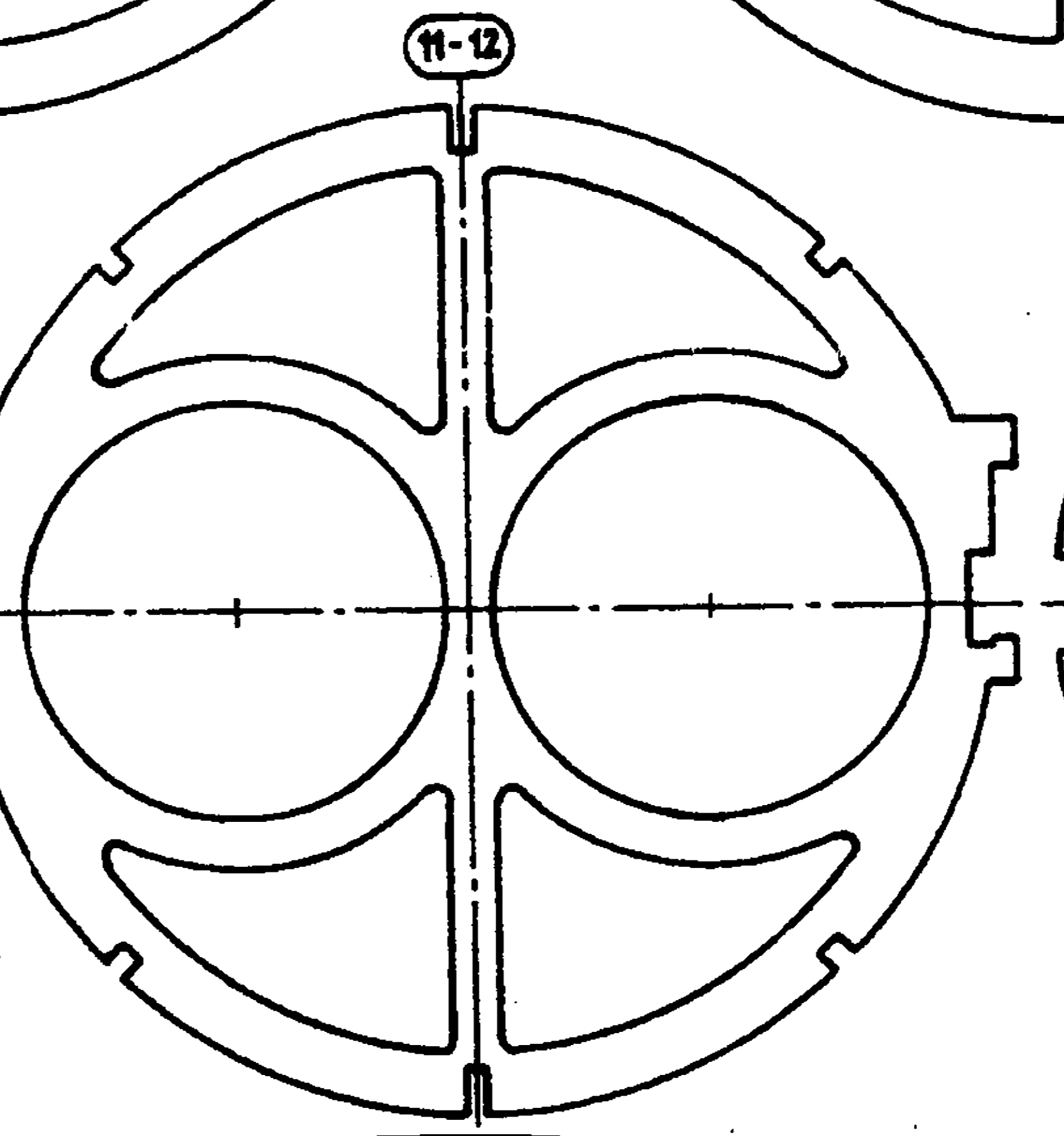
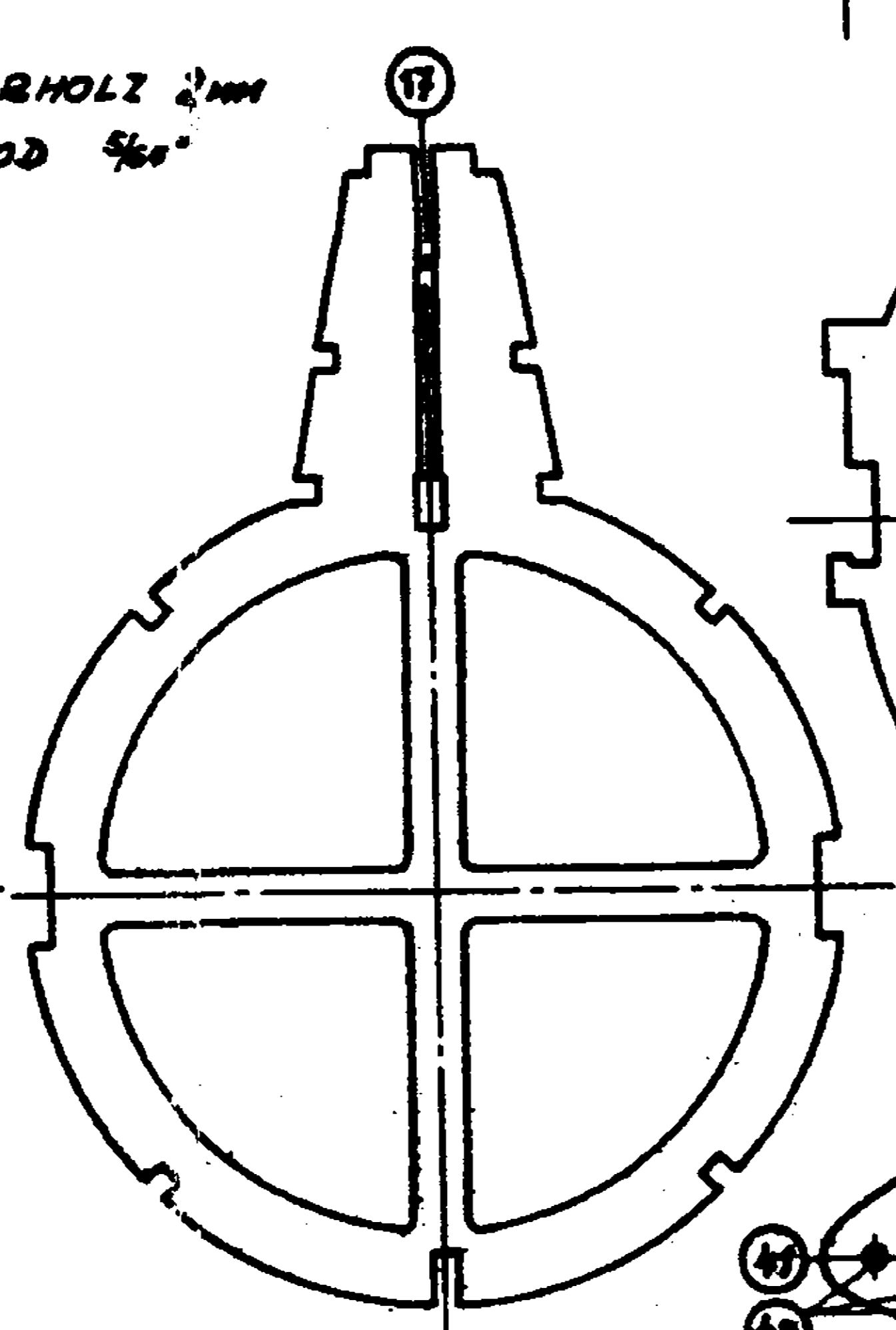
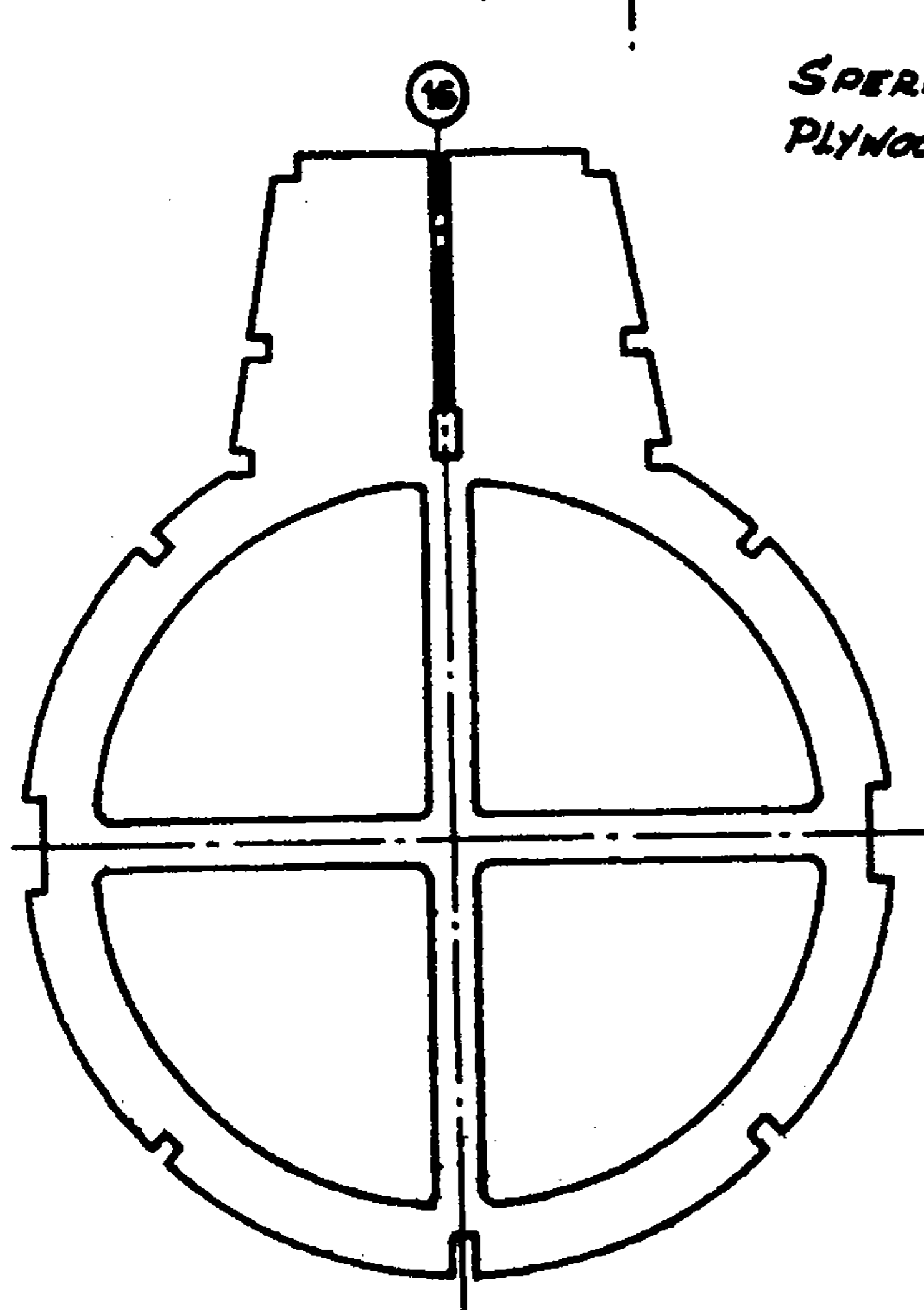
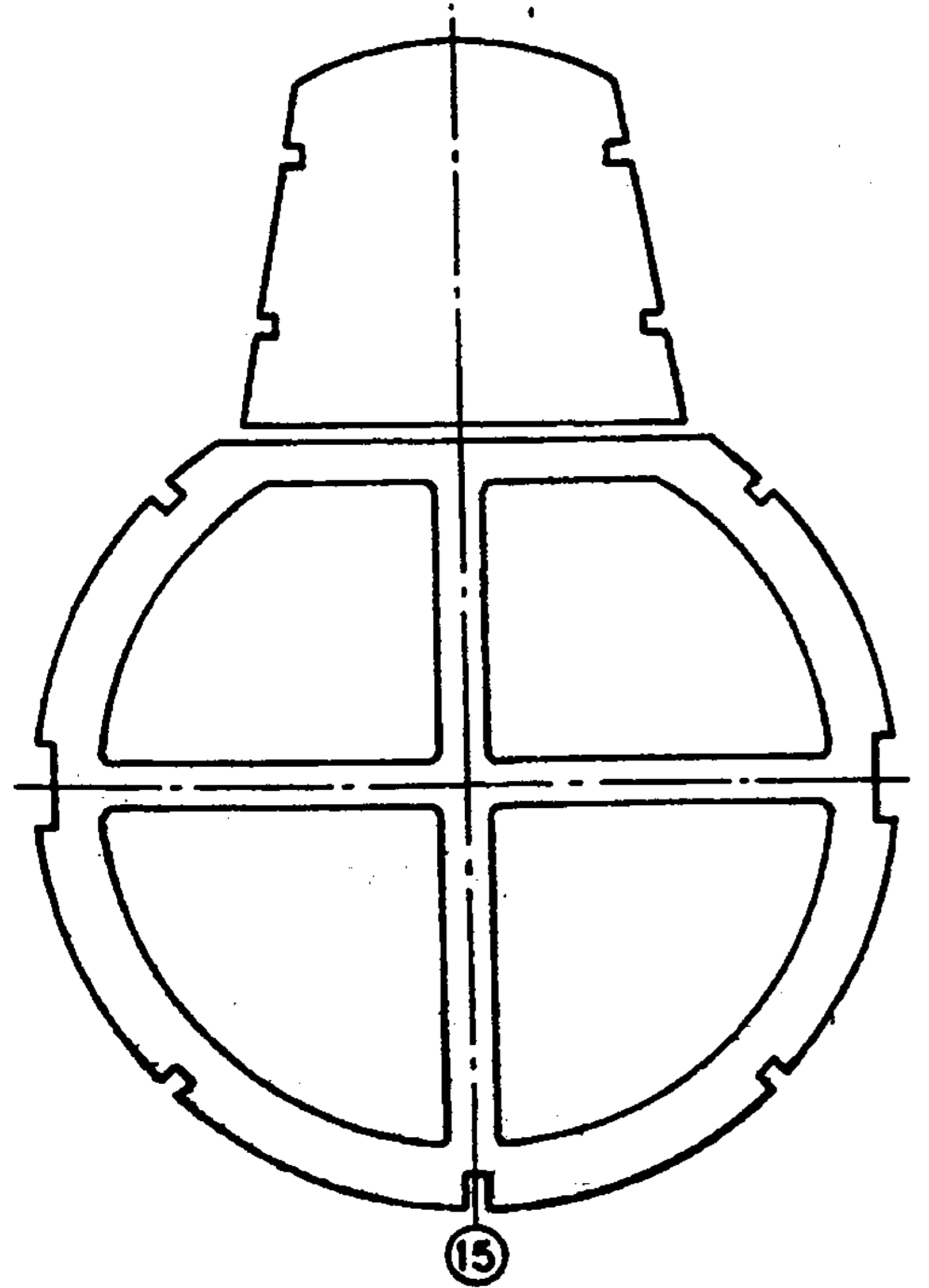
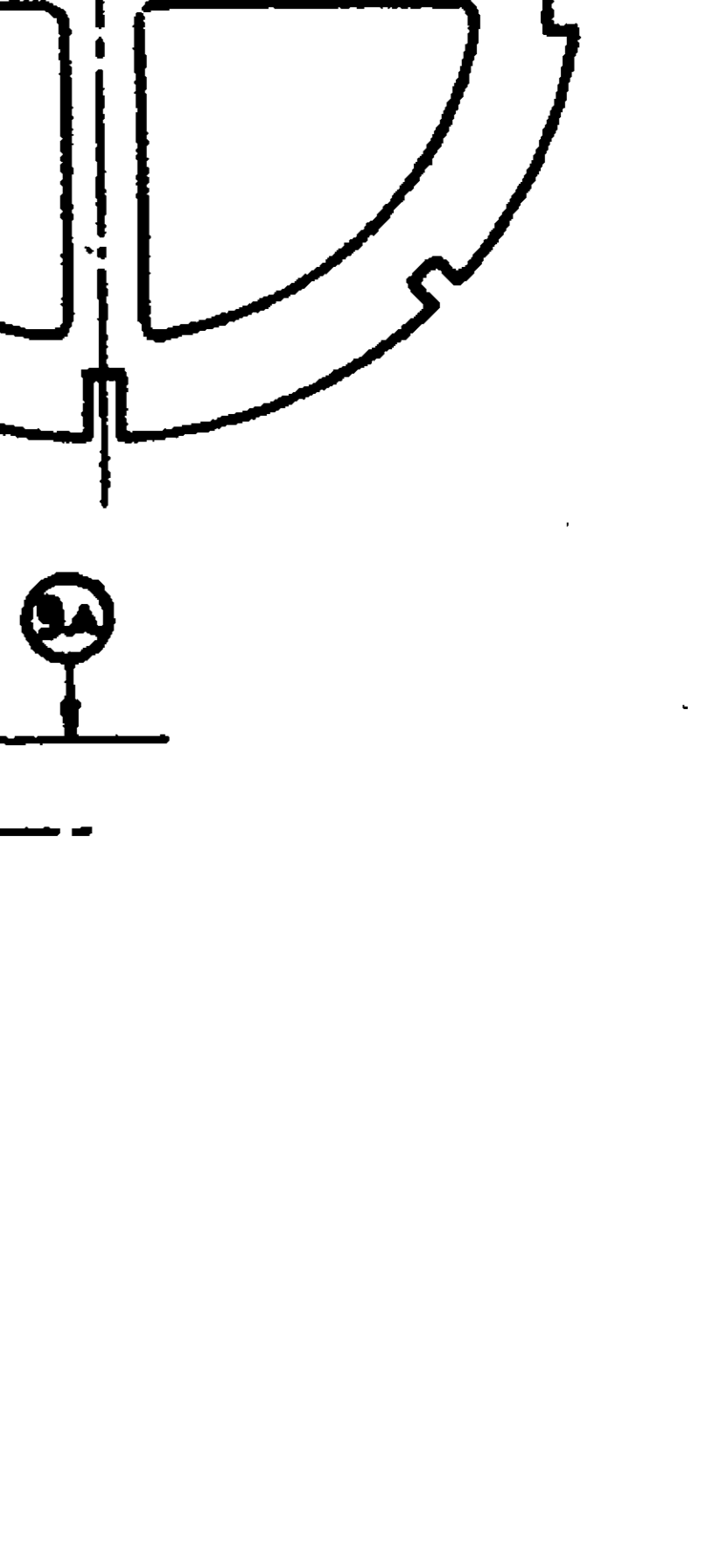
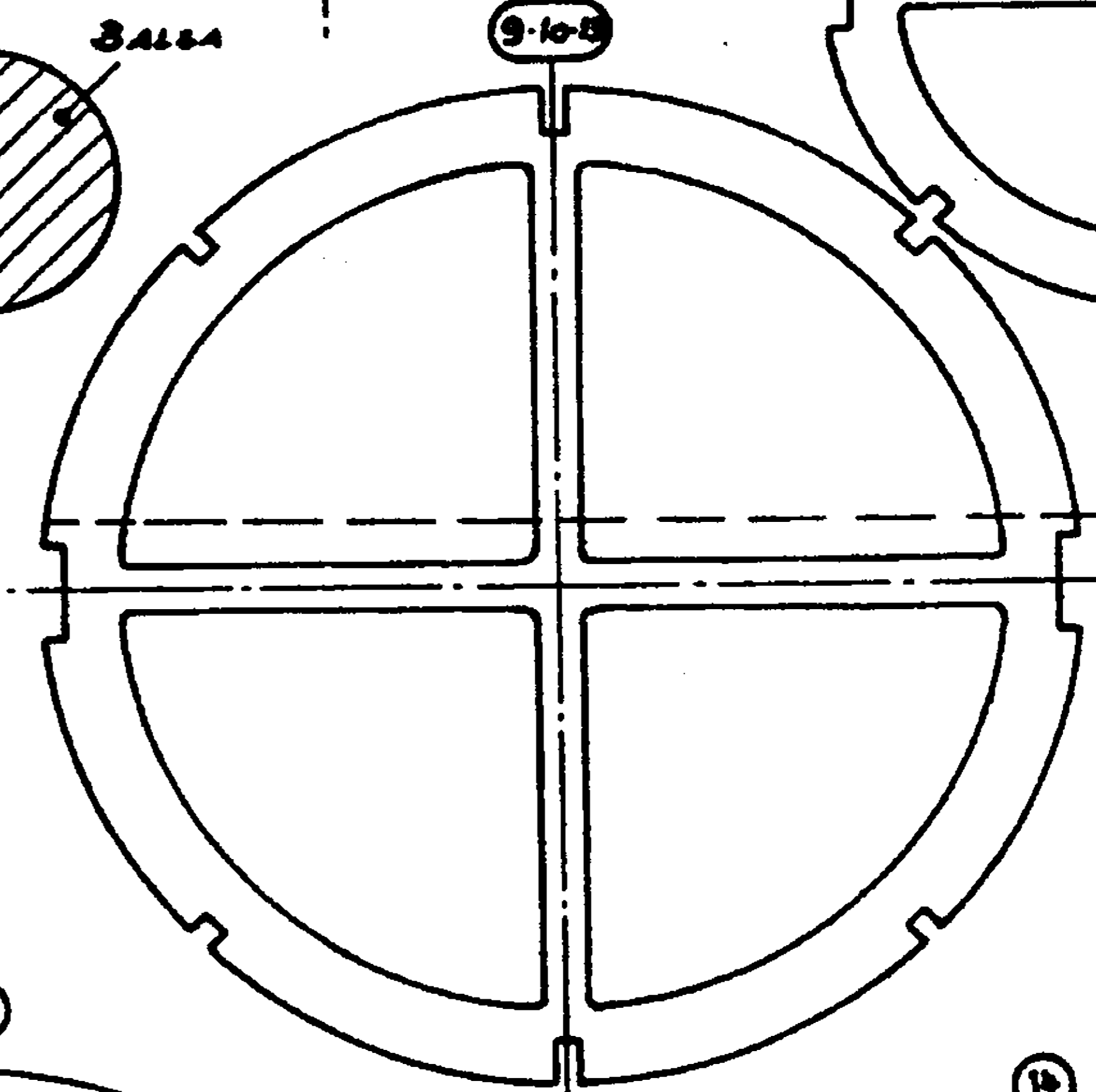
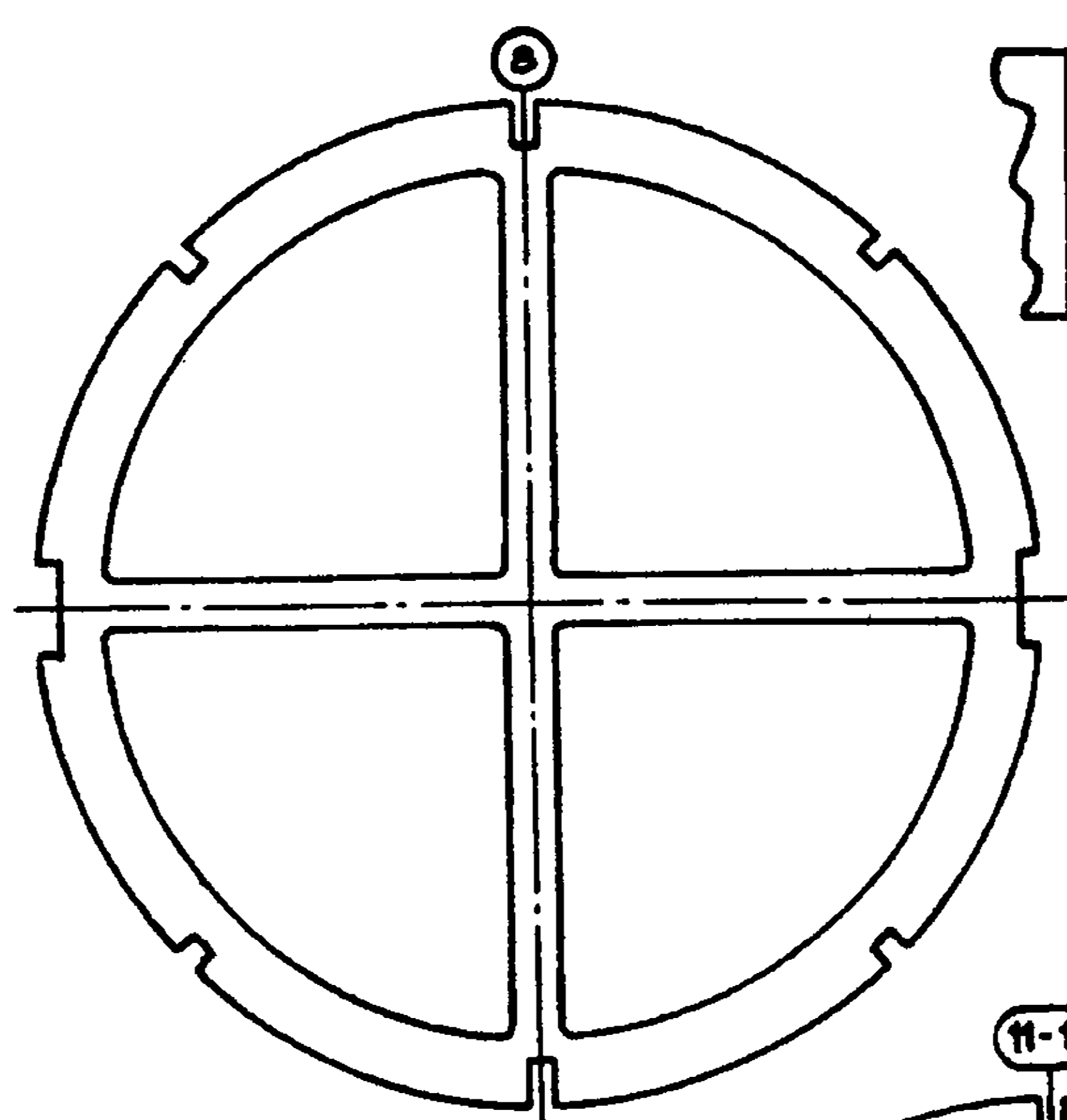
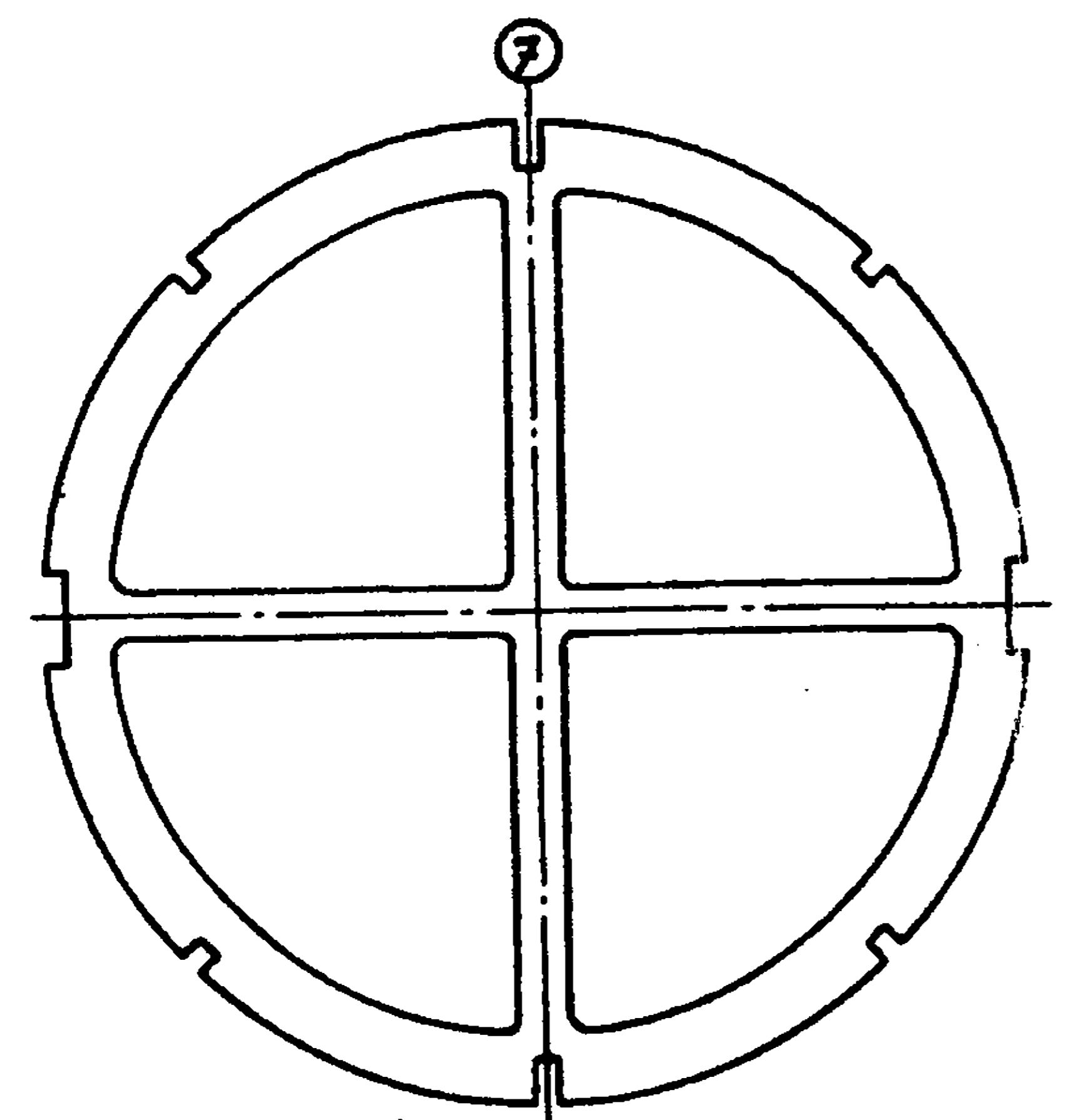
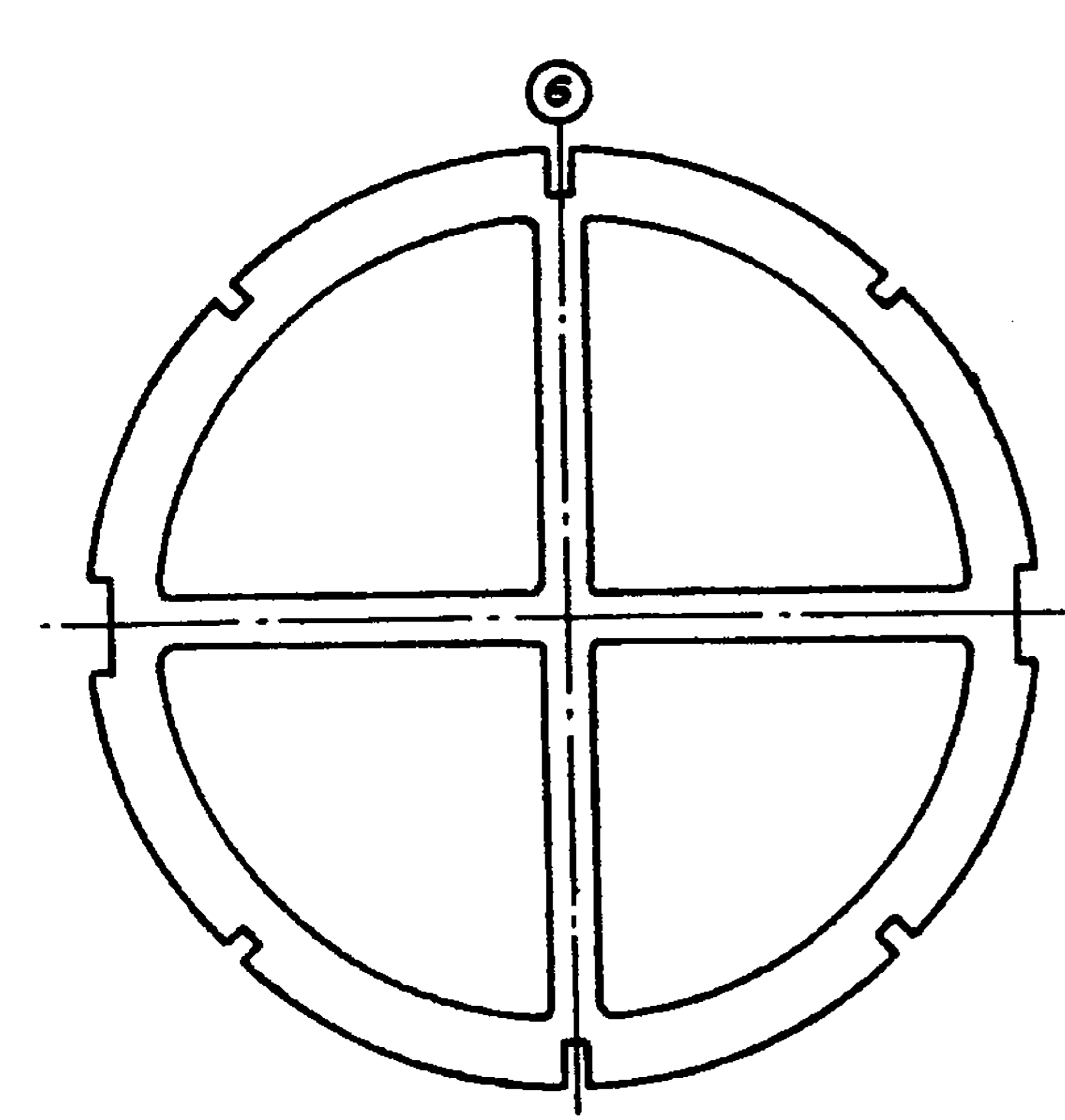
MRIZ

Fieseler Fi 103

SERIE REICHENBERG IV
BLATT 2



Pulsorreactores.com



SPERRHOLZ 2mm
PLYWOOD $\frac{1}{8}$ "

BALSA