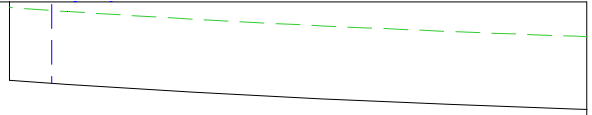
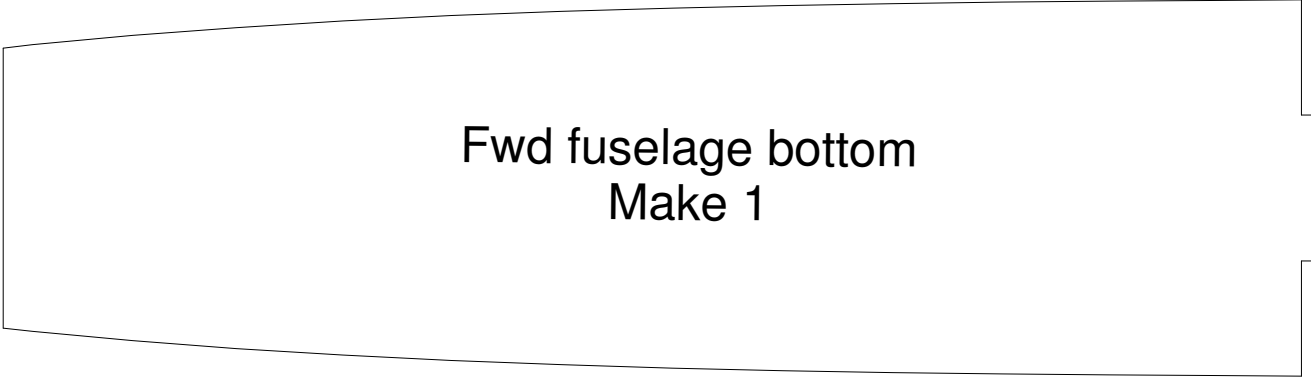


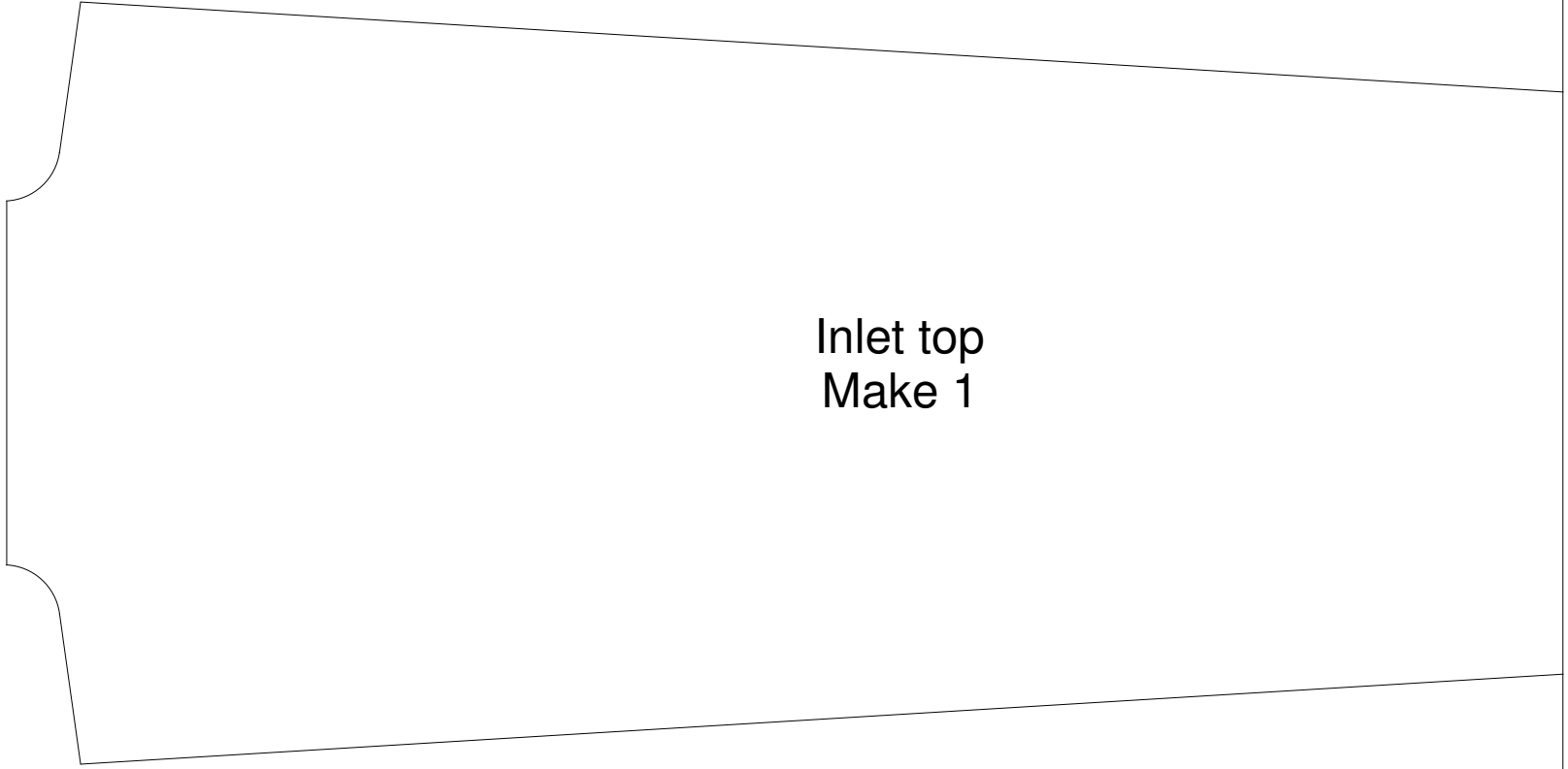
Make 1 and  
laminate



Fwd fuselage bottom  
Make 1

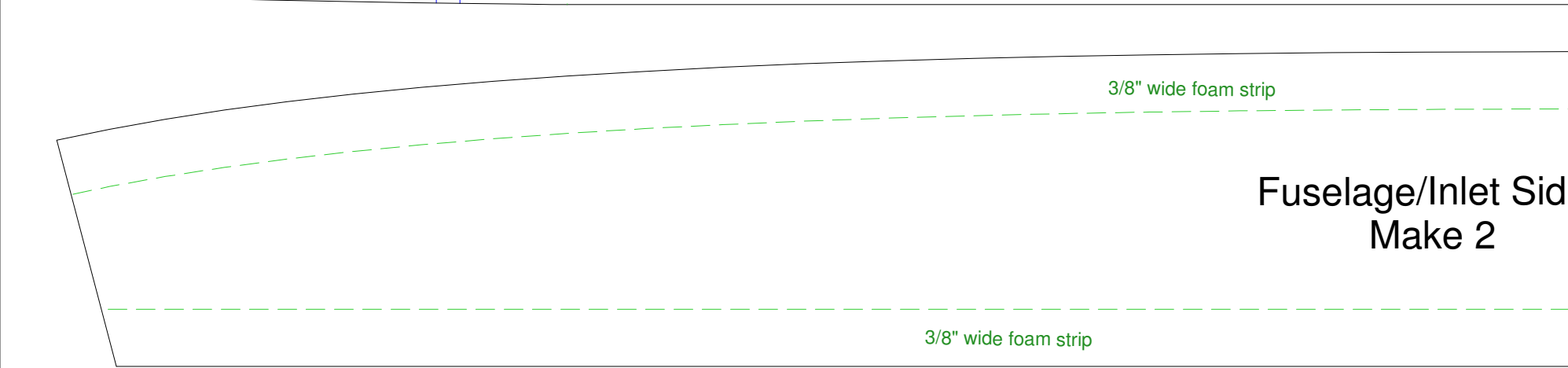


Inlet top  
Make 1





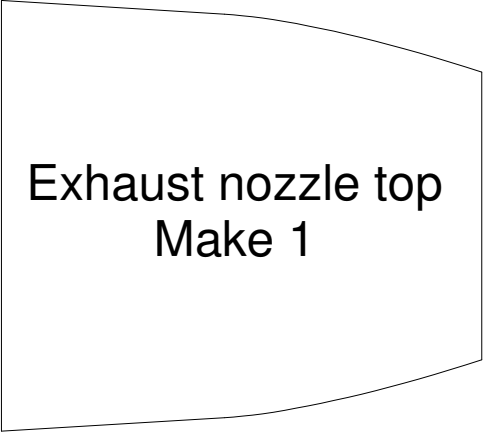
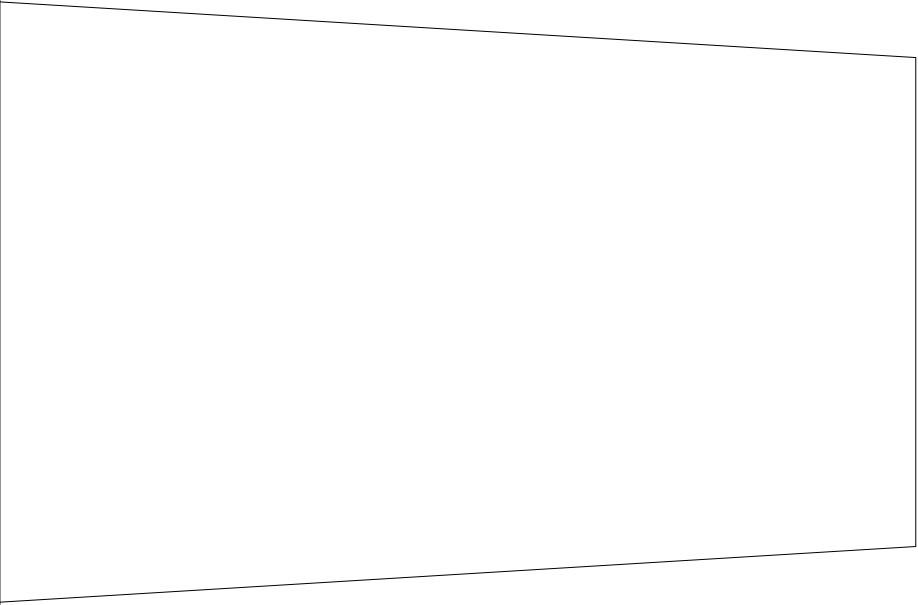
3/8" wide foam strip



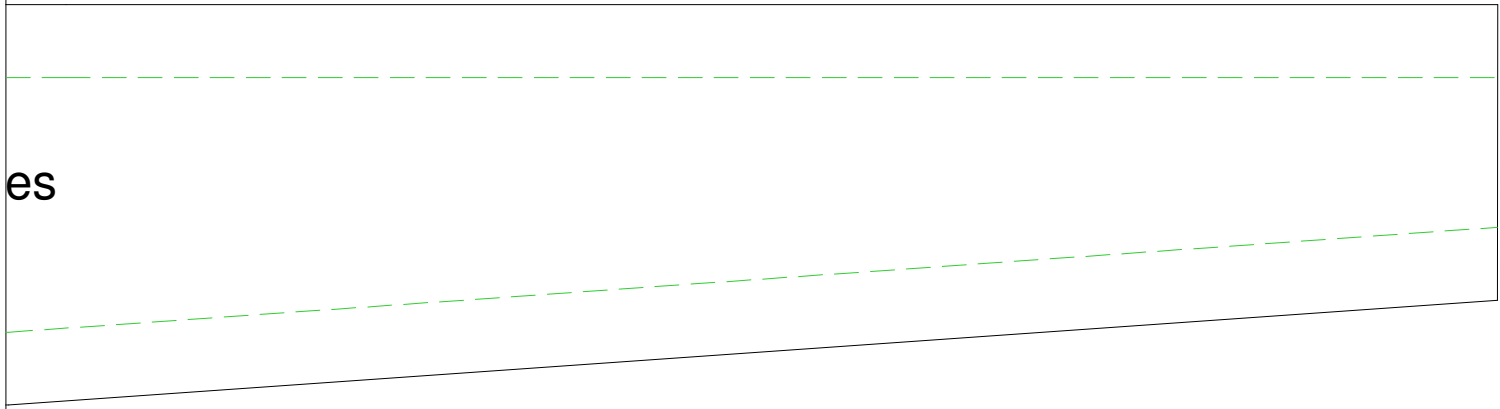
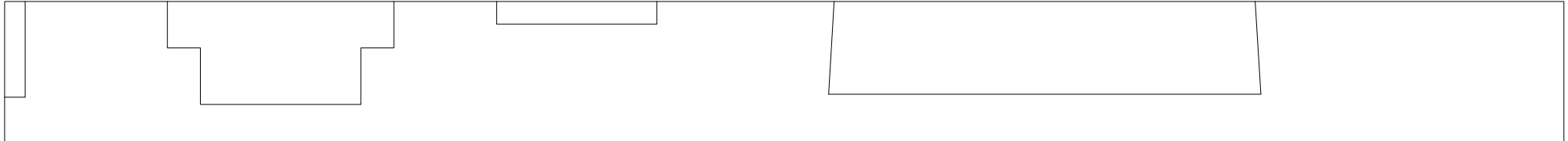
3/8" wide foam strip

Fuselage/Inlet Side  
Make 2

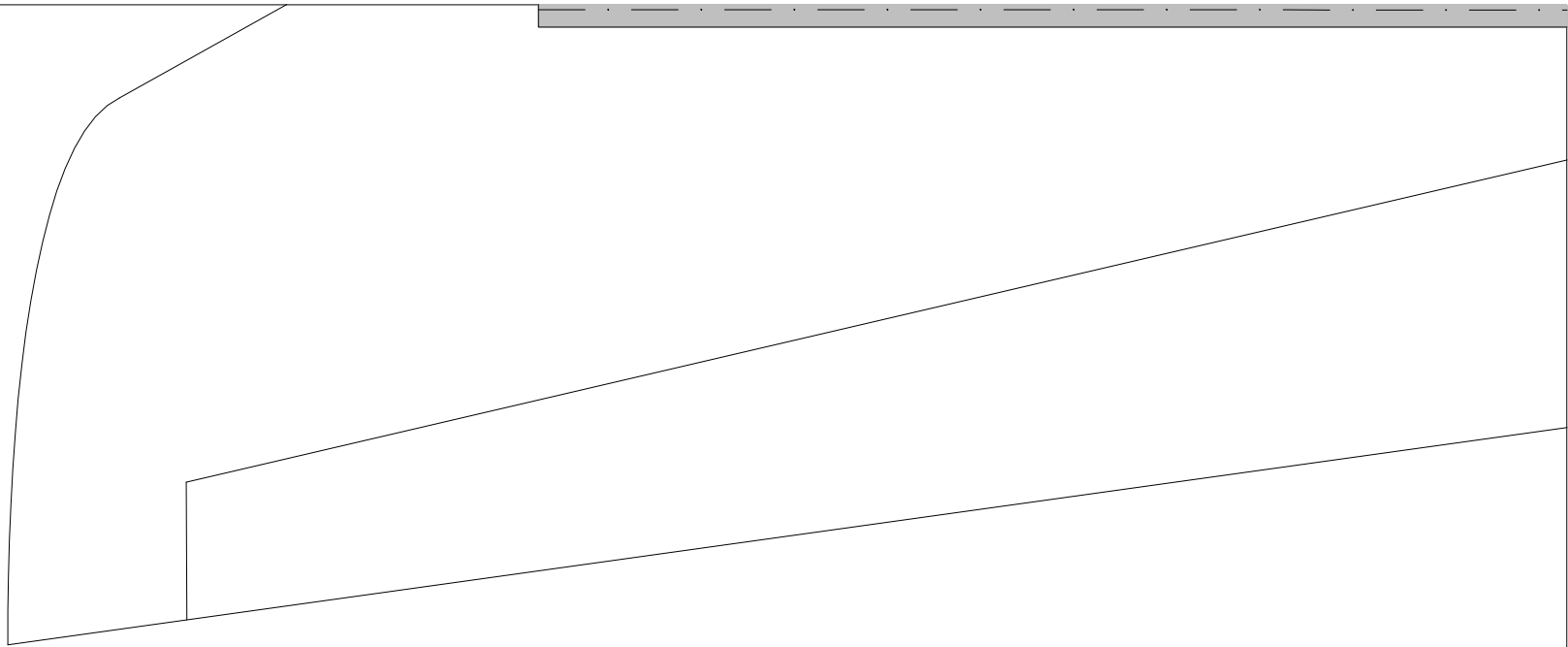
3/8" wide foam strip



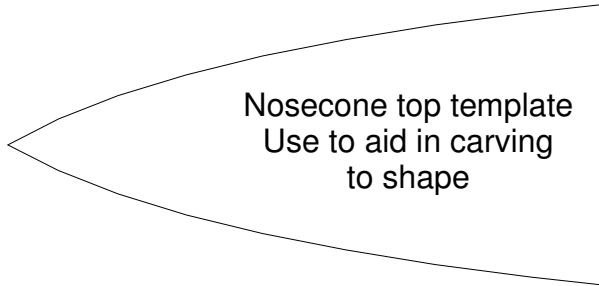
Exhaust nozzle top  
Make 1



# ***Super Bandit Park Jet EDF***



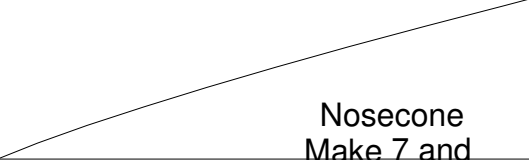
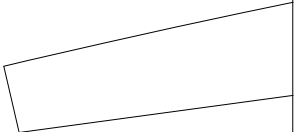
Canopy sill pie



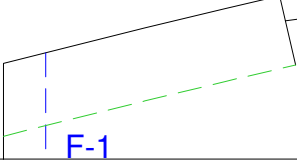
Nosecone top template  
Use to aid in carving  
to shape



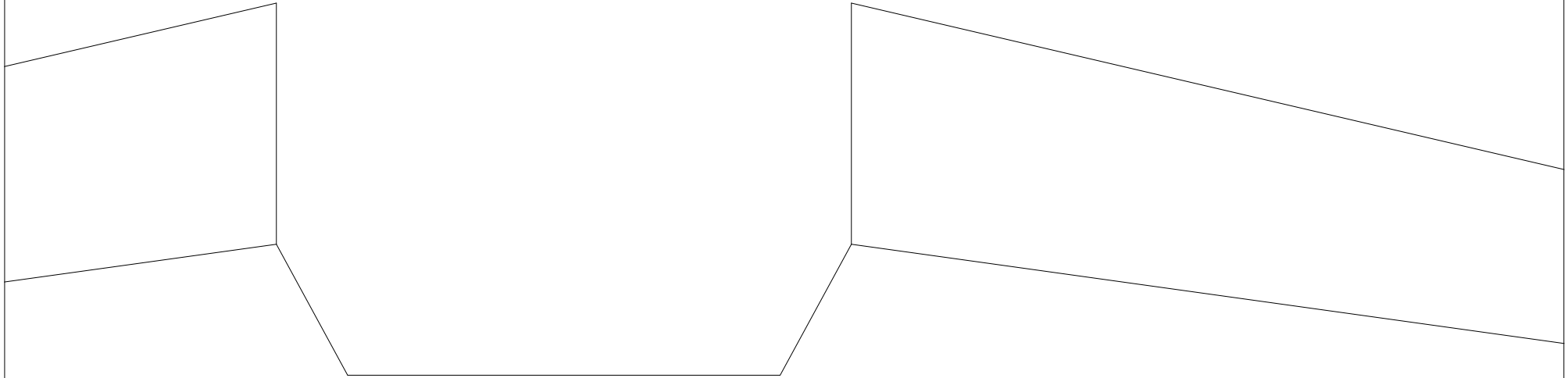
Fwd Fuselage Top  
Make 1



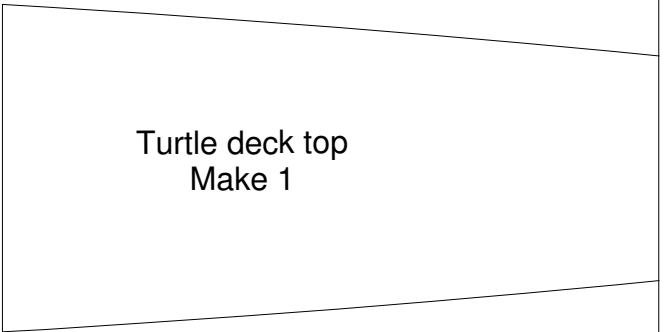
Nosecone  
Make 7 and



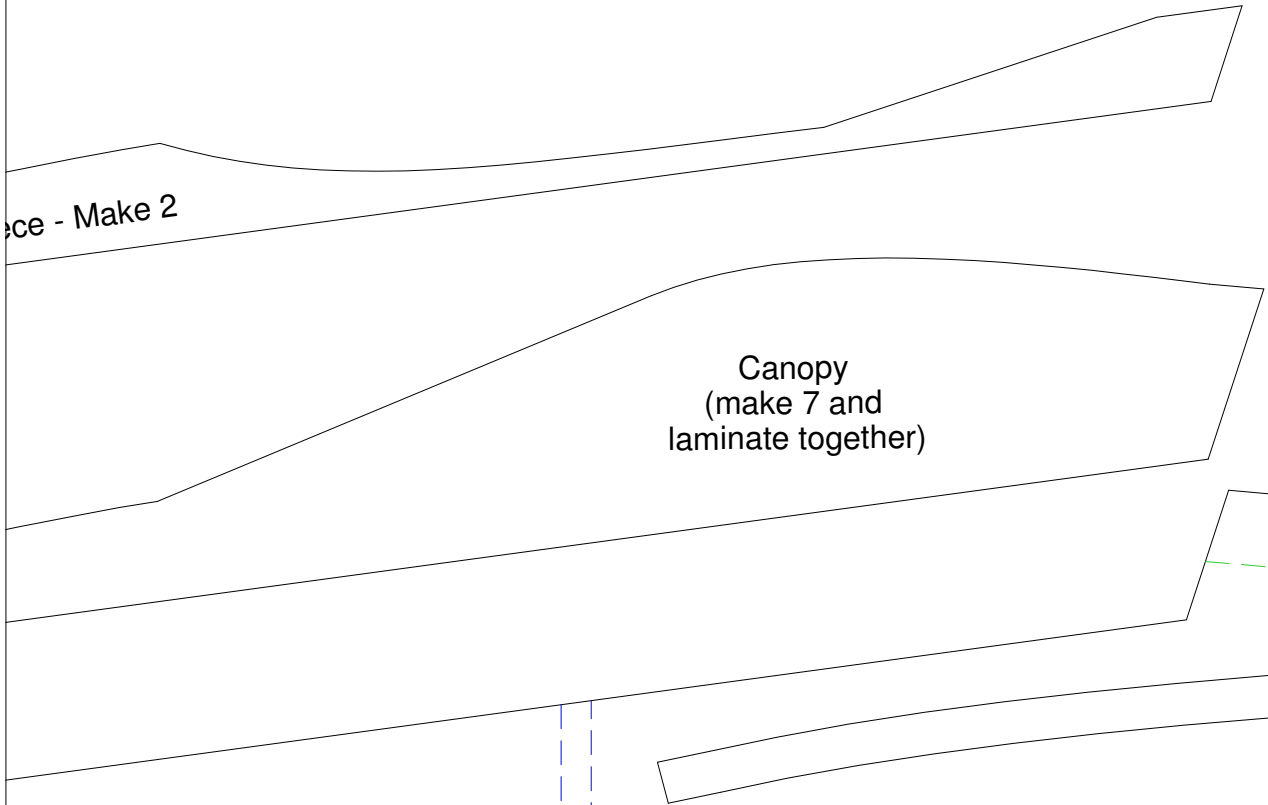
F-1



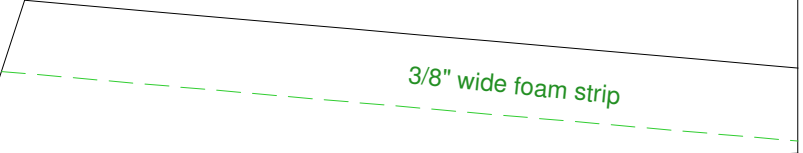
ce - Make 2



Turtle deck top  
Make 1



Canopy  
(make 7 and  
laminated together)

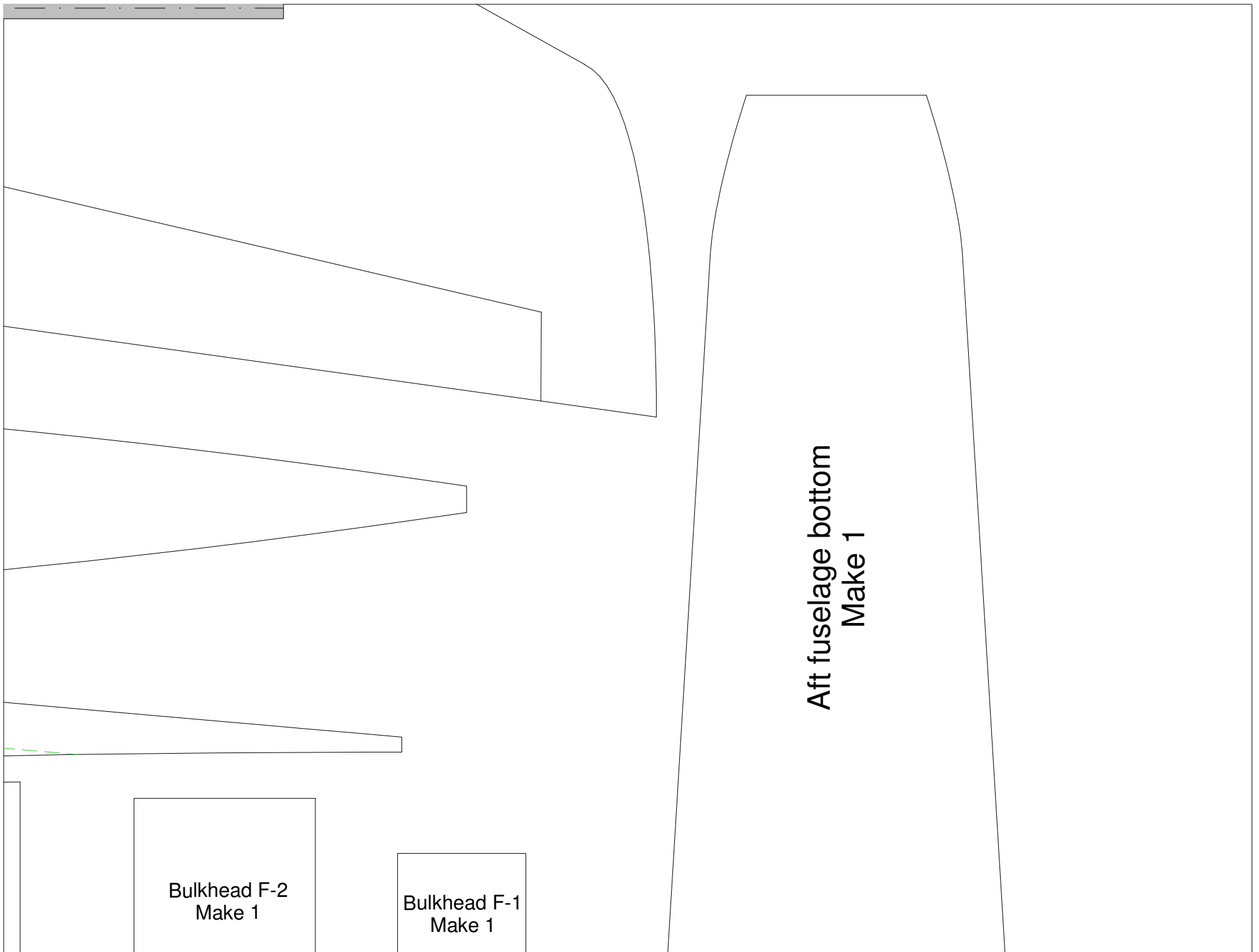


3/8" wide foam strip



F-2

Fwd Fuselage Sides  
Make 2

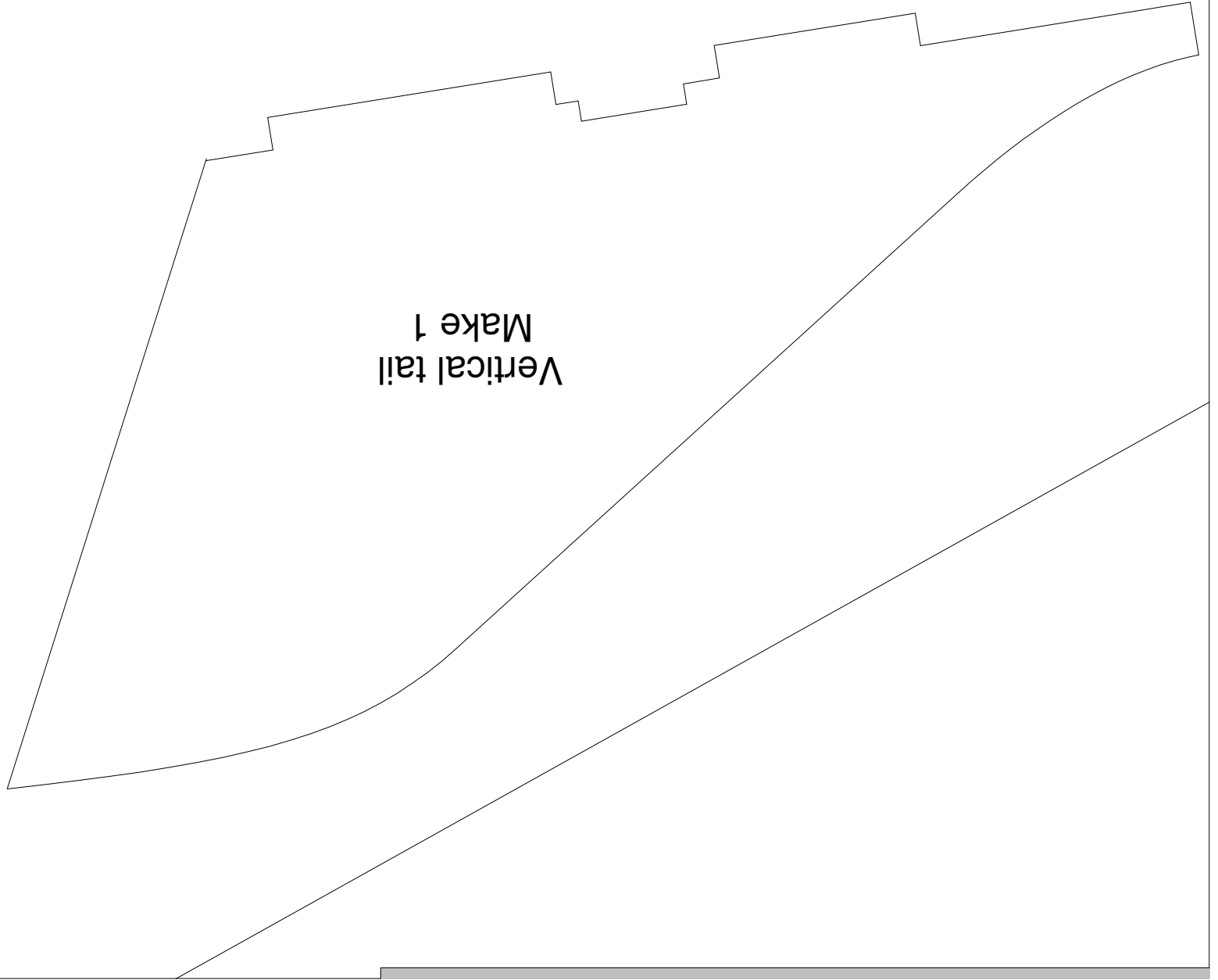


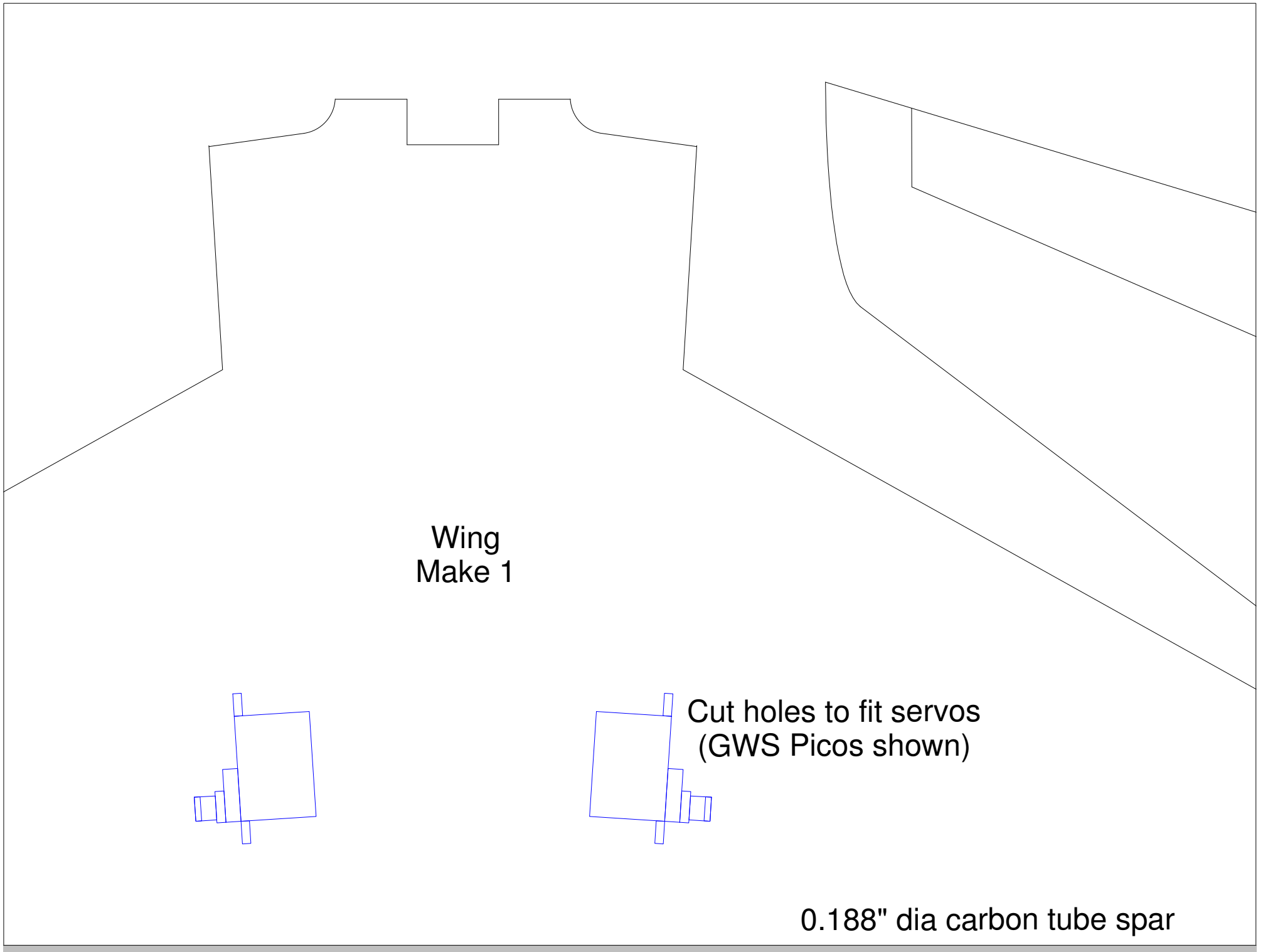
Bulkhead F-2  
Make 1

Bulkhead F-1  
Make 1

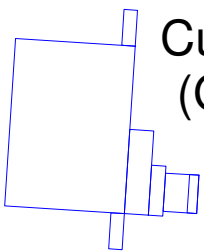
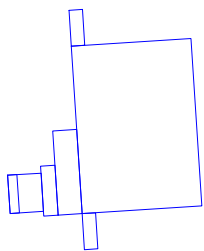
Aft fuselage bottom  
Make 1

Vertical tail  
Make 1





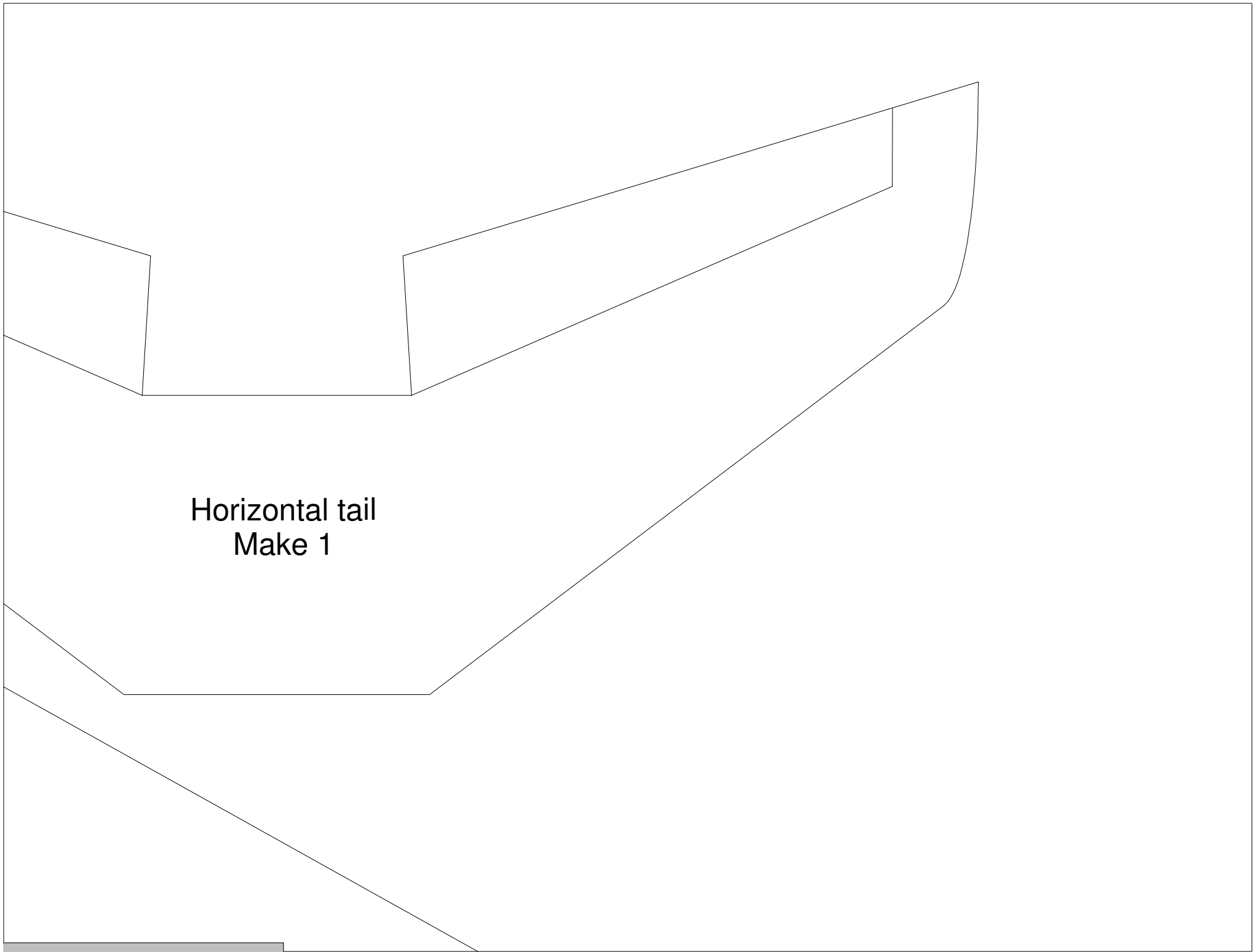
Wing  
Make 1



Cut holes to fit servos  
(GWS Picos shown)

0.188" dia carbon tube spar





Horizontal tail  
Make 1