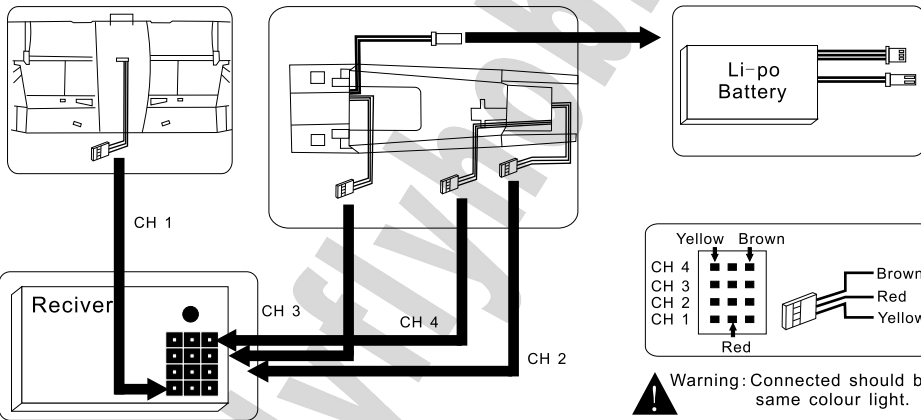


F4U-CORSAIR INSTRUCTION



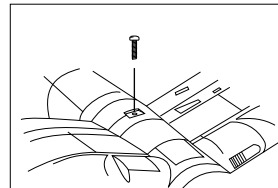
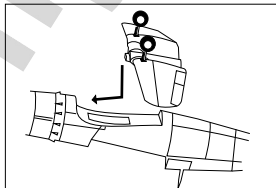
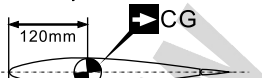
Specification:
 Length: 440mm
 Wingspan: 550mm
 Flight Weight: 180-190g



1. Wings installed

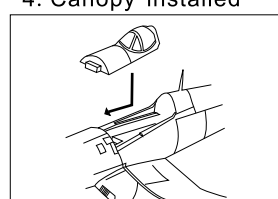
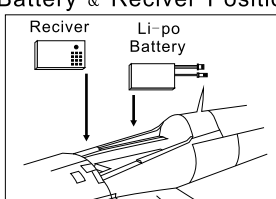
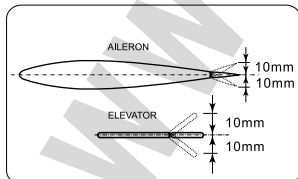
2. Screws lock the wings

The CG position will vary depends on you requirement. Move the CG to achieve your control style.



3. Battery & Receiver Position

4. Canopy installed



Product Introduction

Thank you for purchasing FLYFLYRC FF8-802 Pro Easy balance charger. This charger is compact and light, which can charge 2s or 3s of battery pack, especially there is separated corresponding balance port for each battery pack. Before using it, please read the user manual carefully.



Power Slot



2S Balance Port

3S Balance Port

Power LED

Specification

Input Voltage: 110-240 V AC
 Output Current: 3× 700 mA
 Display: 3× Bicolor LED
 Max. Charging Current: 3× 850 mA
 Size: 100 mm * 60mm * 35mm
 Weight: 180 g

Instructions

1. Please firstly connect the FF8-802 Pro charger to power, while the three power LEDs will turn from red to green, which indicating that the charger works in good order.

2. (Set 3s battery pack for example) Secondly, please connect the battery pack to 3s balance port, while the three power LEDs will all turn into red and charging begins. Please note once the charging of one cell is done, the corresponding power LED for it will turn green.

3. When the three power LEDs all turn green, the charging for 3S battery pack is finished.



WARNING

Please correctly connect the FF8-802 Pro charger to power and battery pack according to the procedure outlined in user manual.

Please use this charger under supervision.

Please place the charger in a dry environment and keep it away from fire.

Please don't tightly pull and drag the power cord or replace it, or else the fire/electric shock will be caused.

Please don't touch the charger and power with wet hands or it will bring in electric shock. To extend the working life of the charger, please remove it from power once charging is finished.

Children must be watched by adults to use the charger.